

COAHUILA

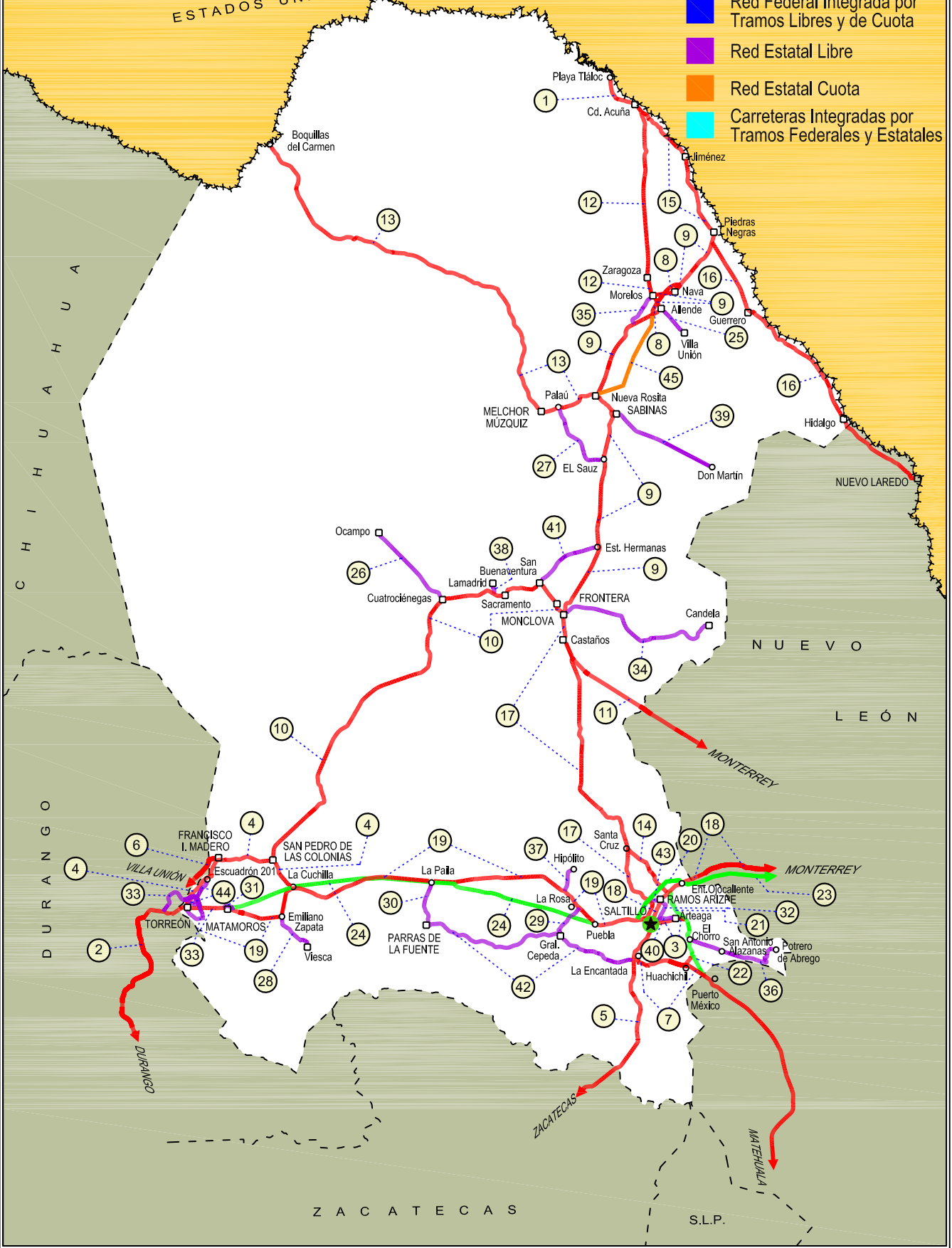
NO. INDICE	CARRETERA	ruta
---RED FEDERAL LIBRE---		
1	Cd. Acuña - Presa de La Amistad	MEX-002
2	Durango - Torreón	MEX-040
3	Ent. Bella Unión - Saltillo	MEX-057
4	Ent. La Cuchilla - Torreón	MEX-040
5	Ent. Morelos - Saltillo	MEX-054
6	Gregorio García - Francisco I. Madero	MEX-040
7	Huachichil - La Encantada	MEX-057
8	Libramiento Allende - Nava	MEX-057
9	Monclova - Piedras Negras	MEX-057
10	Monclova - San Pedro de Las Colonias	MEX-030
11	Monterrey - Castaños	MEX-053
12	Morelos - Cd. Acuña	MEX-029
13	Nueva Rosita - Boquillas del Carmen	MEX-053
14	Ojo Caliente - Santa Cruz	MEX-057
15	Piedras Negras - Cd. Acuña	MEX-002
16	Piedras Negras - Nuevo Laredo	MEX-002
17	Saltillo - Monclova	MEX-057
18	Saltillo - Monterrey	MEX-040
19	Saltillo - Torreón	MEX-040
---RED FEDERAL DE CUOTA---		
20	Libramiento Norponiente de Saltillo (Cuota)	MEX-040D
21	Libramiento Oriente de Saltillo (Cuota)	MEX-057D
22	Puerto México - La Carbonera (Cuota)	MEX-057D
23	Saltillo - Monterrey (Cuota)	MEX-040D
24	Torreón - Saltillo (Cuota)	MEX-040D
---RED ESTATAL LIBRE---		
25	Allende - Villa Unión	COA-015
26	Cuatro Ciénegas - Ocampo	COA-048
27	El Sauz - Palau	COA-022
28	Emiliano Zapata - Viesca	COA-082
29	Ent. La Rosa - General Cepeda	COA-034
30	Ent. Paila - Parras de La Fuente	COA-102
31	Libramiento de Matamoros	COA
32	Libramiento de Saltillo J.L.P.	COA
33	Libramiento de Torreón	COA
34	Monclova - Estación Candela	COA-030-NL
35	Morelos - Ent. Las Corrientes	COA-010
36	Puerto de Flores - El Hondable	COA-112
37	Ramal a Hipólito	COA-114
38	Ramal a Lamadrid	COA-042
39	Sabinas - Don Martín	COA-025
40	Saltillo - Arteaga	COA-106
41	San Buenaventura - Estación Hermanas	COA-034
42	T. C. (Ent. Morelos - Saltillo) - Parras de La Fuente	COA-105
43	T. C. (Saltillo - Monclova) - Ramos Arizpe	COA
44	Torreón - Escuadrón 201	COA-011
---RED ESTATAL DE CUOTA---		
45	Nueva Rosita - Ent. Allende (Cuota)	COA-D

05 COAHUILA

SECRETARÍA DE COMUNICACIONES Y TRANSPORTES
DIRECCIÓN GENERAL DE SERVICIOS TÉCNICOS

ESTADOS UNIDOS DE AMÉRICA

- ① --- Número Índice
- Red Federal Libre
- Red Federal Cuota
- Red Federal Integrada por Tramos Libres y de Cuota
- Red Estatal Libre
- Red Estatal Cuota
- Carreteras Integradas por Tramos Federales y Estatales



COAHUILA

1 CARR : Cd. Acuña - Presa de La Amistad

CLAVE: 05085

RUTA: MEX-002

AÑO : 2012

LUGAR	ESTACION				CLASIFICACION VEHICULAR EN PORCIENTO														COORDENADAS	
	KM	TE	SC	TDPA	M	A	B	C2	C3	T3S2	T3S3	T3S2R4	OTROS	A	B	C	K'	D	LATITUD	LONGITUD
Cd. Acuña	0.00	3	1	9112	1.4	91.1	1.3	3.7	0.4	0.8	0.7	0.1	0.5	92.5	1.3	6.2	0.073	0.507	29.333949	-100.964725
Cd. Acuña	0.00	3	2	9367	1.0	90.8	1.4	4.1	0.4	0.9	0.8	0.1	0.5	91.8	1.4	6.8	0.102	0.507	29.333938	-100.964722
T. Izq. Santa Eulalia	10.60	1	1	2890	1.3	80.2	3.5	9.5	1.4	3.0	0.5	0.1	0.5	81.5	3.5	15.0	0.140	0.507	29.343736	-101.006019
T. Izq. Santa Eulalia	10.60	1	2	2807	0.8	79.4	4.0	9.9	1.5	3.4	0.5	0.1	0.4	80.2	4.0	15.8	0.147	0.507	29.343736	-101.006019
Presa de La Amistad	23.00	1	0	3650	1.3	81.8	0.1	13.2	2.0	1.2	0.3	0.0	0.1	83.1	0.1	16.8	0.118	0.539	29.447671	-101.072792

2 CARR : Durango - Torreón

CLAVE: 10085

RUTA: MEX-040

AÑO : 2012

LUGAR	ESTACION				CLASIFICACION VEHICULAR EN PORCIENTO														COORDENADAS	
	KM	TE	SC	TDPA	M	A	B	C2	C3	T3S2	T3S3	T3S2R4	OTROS	A	B	C	K'	D	LATITUD	LONGITUD
Durango	0.00	3	1	10569	0.9	83.0	2.0	10.0	1.1	1.4	1.1	0.2	0.3	83.9	2.0	14.1	0.099	0.527	24.077739	-104.590291
Durango	0.00	3	2	10145	0.9	81.7	2.0	10.9	1.2	1.5	1.3	0.2	0.3	82.6	2.0	15.4	0.081	0.527	24.077740	-104.590288
T. Der. Cd. de Los Niños	7.70	3	1	5710	1.0	84.2	1.6	9.3	1.1	1.4	0.8	0.2	0.4	85.2	1.6	13.2	0.098	0.511	24.082510	-104.586210
T. Der. Cd. de Los Niños	7.70	3	2	5999	1.0	83.1	1.9	9.8	1.2	1.6	0.9	0.2	0.3	84.1	1.9	14.0	0.091	0.511	24.082520	-104.586210
X. Periférico de Durango	9.00	1	1	6972	1.4	83.8	1.5	8.5	1.0	2.2	1.0	0.2	0.4	85.2	1.5	13.3	0.087	0.510	24.088458	-104.580860
X. Periférico de Durango	9.00	1	2	6712	1.2	83.2	1.6	8.6	1.2	2.5	1.1	0.2	0.4	84.4	1.6	14.0	0.094	0.510	24.088456	-104.580858
T. Der. Aeropuerto	9.42	3	1	4957	1.1	80.6	0.9	9.4	1.5	3.6	1.9	0.4	0.6	81.7	0.9	17.4	0.098	0.503	24.098714	-104.576230
T. Der. Aeropuerto	9.42	3	2	4891	1.3	78.5	1.0	10.1	1.6	4.2	2.2	0.4	0.7	79.8	1.0	19.2	0.109	0.503	24.098713	-104.576232
La Calera	10.85	3	0	6665	0.7	72.8	1.7	11.8	2.8	5.3	3.1	0.9	0.9	73.5	1.7	24.8	0.084	0.510	24.111408	-104.571885
Abraham González	27.10	3	0	3560	0.3	65.0	2.1	13.6	2.5	10.9	4.0	1.0	0.6	65.3	2.1	32.6	0.098	0.501	24.200788	-104.525729
Francisco I. Madero	56.30	1	0	3966	0.3	66.0	4.9	10.0	2.5	10.6	3.9	1.2	0.6	66.3	4.9	28.8	0.086	0.508	24.393029	-104.330145
Francisco I. Madero	56.30	3	0	3916	0.4	66.6	3.9	9.9	2.6	11.0	3.9	1.1	0.6	67.0	3.9	29.1	0.085	0.504	24.405199	-104.303299
Guadalupe Victoria	77.50	1	0	4678	0.6	70.1	4.6	8.8	2.1	9.0	3.1	1.0	0.7	70.7	4.6	24.7	0.093	0.506	24.446861	-104.138052
Guadalupe Victoria	77.50	3	0	5711	0.6	70.5	4.3	11.1	1.8	7.6	2.6	0.9	0.6	71.1	4.3	24.6	0.083	0.502	24.449560	-104.109955
T. Der. Ignacio Allende	90.13	1	0	4645	0.3	64.9	3.8	12.6	2.6	10.4	3.6	1.3	0.5	65.2	3.8	31.0	0.088	0.506	24.497481	-104.024000
T. Der. Ignacio Allende	90.13	3	0	2907	0.9	57.0	5.1	12.4	3.7	13.1	4.9	2.2	0.7	57.9	5.1	37.0	0.076	0.500	24.499490	-104.020026
T. Izq. Peñón Blanco	120.90	1	0	2230	0.7	46.3	4.8	15.8	4.8	17.6	6.8	2.7	0.5	47.0	4.8	48.2	0.085	0.509	24.732348	-103.843880
T. Izq. Peñón Blanco	120.90	3	0	2028	0.5	51.8	3.0	13.2	4.4	17.1	6.8	2.3	0.9	52.3	3.0	44.7	0.084	0.505	24.741830	-103.838399
Cuencamé	144.30	1	0	2120	0.3	54.4	2.4	11.7	4.8	17.5	6.2	2.1	0.6	54.7	2.4	42.9	0.086	0.511	24.850324	-103.715948
Cuencamé	144.30	3	0	6168	0.4	50.0	5.7	10.1	4.8	18.0	5.1	5.6	0.3	50.4	5.7	43.9	0.069	0.520	24.909556	-103.704633
T. Izq. Nazas	171.61	1	0	4589	0.7	45.3	2.9	10.3	8.0	20.1	7.8	4.0	0.9	46.0	2.9	51.1	0.066	0.518	25.085060	-103.771379
T. Izq. Nazas	171.61	3	0	5321	1.3	72.9	4.5	7.9	2.9	6.1	1.9	2.1	0.4	74.2	4.5	21.3	0.072	0.506	25.091026	-103.769901
T. Der. Villa Juárez	194.40	3	0	4245	0.7	48.5	6.5	11.0	7.6	14.6	7.2	3.1	0.8	49.2	6.5	44.3	0.077	0.501	25.225963	-103.628302
León Guzmán	229.58	3	0	8753	1.7	72.5	4.5	7.9	2.9	6.1	1.9	2.1	0.4	74.2	4.5	21.3	0.074	0.503	25.510198	-103.648989
Cd. Lerdo	244.80	1	1	5598	1.6	66.7	5.4	6.5	3.2	10.6	2.9	2.3	0.8	68.3	5.4	26.3	0.096	0.503	25.511911	-103.541116

COAHUILA

2 CARR: Durango - Torreón

CLAVE: 10085

RUTA: MEX-040

AÑO: 2012

LUGAR	ESTACION				CLASIFICACION VEHICULAR EN PORCIENTO													COORDENADAS		
	KM	TE	SC	TDPA	M	A	B	C2	C3	T3S2	T3S3	T3S2R4	OTROS	A	B	C	K'	D	LATITUD	LONGITUD
Cd. Lerdo	244.80	1	2	5524	1.3	63.2	5.7	7.2	3.8	12.3	3.3	2.4	0.8	64.5	5.7	29.8	0.097	0.503	25.511911	-103.541116
T. Izq. Gómez Palacio	248.90	3	1	29832	2.2	89.8	1.7	4.6	0.1	0.2	1.3	0.0	0.1	92.0	1.7	6.3	0.088	0.537	25.552025	-103.487025
T. Izq. Gómez Palacio	248.90	3	2	30074	2.1	89.2	1.9	5.0	0.1	0.2	1.4	0.0	0.1	91.3	1.9	6.8	0.087	0.537	25.552025	-103.487022
Lim. Edos. Term. Dgo. Ppia. Coah.	251.00																			
Torreón	255.80	1	1	17969	1.8	88.7	1.1	3.5	0.1	1.1	2.9	0.2	0.6	90.5	1.1	8.4	0.075	0.525	25.548262	-103.471805
Torreón	255.80	1	2	17839	2.0	87.6	1.2	4.0	0.1	1.3	3.0	0.2	0.6	89.6	1.2	9.2	0.079	0.525	25.548273	-103.471822

3 CARR: Ent. Bella Unión - Saltillo

CLAVE: 05003

RUTA: MEX-057

AÑO: 2012

LUGAR	ESTACION				CLASIFICACION VEHICULAR EN PORCIENTO													COORDENADAS		
	KM	TE	SC	TDPA	M	A	B	C2	C3	T3S2	T3S3	T3S2R4	OTROS	A	B	C	K'	D	LATITUD	LONGITUD
T. C. Ent. Puerto México - Ent. Ojo Caliente (Cuota)	0.00																			
T. Der. Arteaga	4.61	1	1	4679	2.0	52.9	8.4	33.3	0.4	1.6	0.7	0.5	0.2	54.9	8.4	36.7	0.132	0.502	25.444003	-100.834471
T. Der. Arteaga	4.61	1	2	4646	3.7	49.8	8.9	34.0	0.4	1.8	0.7	0.5	0.2	53.5	8.9	37.6	0.164	0.502	25.443850	-100.834575
Saltillo	17.00	1	1	15770	0.8	80.9	4.7	6.1	2.4	3.0	1.0	0.3	0.8	81.7	4.7	13.6	0.094	0.541	25.436433	-100.907207
Saltillo	17.00	1	2	16191	0.9	79.0	5.2	6.7	2.6	3.5	1.0	0.3	0.8	79.9	5.2	14.9	0.097	0.541	25.436669	-100.907239

4 CARR: Ent. La Cuchilla - Torreón

CLAVE: 05021

RUTA: MEX-040

AÑO: 2012

LUGAR	ESTACION				CLASIFICACION VEHICULAR EN PORCIENTO													COORDENADAS		
	KM	TE	SC	TDPA	M	A	B	C2	C3	T3S2	T3S3	T3S2R4	OTROS	A	B	C	K'	D	LATITUD	LONGITUD
La Cuchilla	0.00	3	0	836	2.3	59.5	6.1	17.1	4.4	5.4	2.9	1.7	0.6	61.8	6.1	32.1	0.090	0.516	25.626719	-102.882884
T. Der. Mayran	3.30	3	0	1220	3.8	65.7	3.9	14.1	3.2	4.6	2.5	1.4	0.8	69.5	3.9	26.6	0.089	0.502	25.647261	-102.905514
San Pedro de Las Colonias	18.70	1	1	2815	8.5	63.2	7.0	18.6	0.7	1.1	0.5	0.3	0.1	71.7	7.0	21.3	0.098	0.501	25.750960	-102.971681
San Pedro de Las Colonias	18.70	1	2	2824	7.6	59.9	7.9	21.9	0.9	1.1	0.4	0.2	0.1	67.5	7.9	24.6	0.086	0.501	25.750960	-102.971681
San Pedro de Las Colonias	18.70	3	1	5086	2.3	85.8	2.4	4.9	1.1	1.8	0.8	0.7	0.2	88.1	2.4	9.5	0.092	0.505	25.757522	-103.014053
San Pedro de Las Colonias	18.70	3	2	5196	2.2	84.4	2.6	5.4	1.3	2.2	0.9	0.7	0.3	86.6	2.6	10.8	0.092	0.505	25.757522	-103.014053
Urquiza	33.00	3	1	4357	0.7	83.7	2.9	8.9	0.9	1.5	0.6	0.4	0.4	84.4	2.9	12.7	0.092	0.504	25.772662	-103.136317
Urquiza	33.00	3	2	4424	0.9	83.9	2.8	8.5	1.0	1.5	0.7	0.4	0.3	84.8	2.8	12.4	0.081	0.504	25.772662	-103.136317
T. Der. Fco. I. Madero	43.80	1	1	6055	2.4	79.6	2.7	8.8	1.6	2.7	1.2	0.5	0.5	82.0	2.7	15.3	0.089	0.515	25.762644	-103.241166
T. Der. Fco. I. Madero	43.80	1	2	5704	2.0	77.8	2.8	10.4	1.7	2.9	1.4	0.5	0.5	79.8	2.8	17.4	0.085	0.515	25.762644	-103.241166
T. Der. Fco. I. Madero	43.80	3	1	4736	1.8	81.2	2.7	7.5	1.8	3.1	0.9	0.5	0.5	83.0	2.7	14.3	0.090	0.500	25.757417	-103.287195
T. Der. Fco. I. Madero	43.80	3	2	4743	1.8	79.8	3.0	7.9	2.0	3.4	1.0	0.6	0.5	81.6	3.0	15.4	0.090	0.500	25.757417	-103.287195
T. Izq. Escuadrón 201	62.40	3	1	8054	1.3	81.8	1.9	9.2	1.6	2.1	1.2	0.5	0.4	83.1	1.9	15.0	0.090	0.504	25.670885	-103.351427
T. Izq. Escuadrón 201	62.40	3	2	8184	1.2	80.2	2.2	10.4	1.6	2.2	1.3	0.5	0.4	81.4	2.2	16.4	0.091	0.504	25.670885	-103.351427

COAHUILA

4 CARR: Ent. La Cuchilla - Torreón

CLAVE: 05021

RUTA: MEX-040

AÑO: 2012

LUGAR	ESTACION				CLASIFICACION VEHICULAR EN PORCIENTO										COORDENADAS					
	KM	TE	SC	TDPA	M	A	B	C2	C3	T3S2	T3S3	T3S2R4	OTROS	A	B	C	K'	D	LATITUD	LONGITUD
Torreón	84.00	1	1	8754	0.7	92.7	2.6	2.4	0.2	0.4	0.9	0.0	0.1	93.4	2.6	4.0	0.096	0.517	25.579944	-103.413218
Torreón	84.00	1	2	8847	0.5	92.6	2.9	2.4	0.2	0.4	0.9	0.0	0.1	93.1	2.9	4.0	0.103	0.517	25.579944	-103.413218

5 CARR: Ent. Morelos - Saltillo

CLAVE: 00149

RUTA: MEX-054

AÑO: 2012

LUGAR	ESTACION				CLASIFICACION VEHICULAR EN PORCIENTO										COORDENADAS					
	KM	TE	SC	TDPA	M	A	B	C2	C3	T3S2	T3S3	T3S2R4	OTROS	A	B	C	K'	D	LATITUD	LONGITUD
T. C. Zacatecas - Durango	0.00	3	1	2824	0.2	77.0	5.1	8.2	1.6	3.8	1.4	2.1	0.6	77.2	5.1	17.7	0.080	0.504	22.868965	-102.619534
T. C. Zacatecas - Durango	0.00	3	2	2865	0.2	74.7	5.9	9.3	1.7	3.9	1.4	2.1	0.8	74.9	5.9	19.2	0.083	0.504	22.869011	-102.619607
T. Der. Sta. Mónica	11.00	1	1	2725	0.3	72.5	5.7	8.1	1.7	7.4	1.5	2.2	0.6	72.8	5.7	21.5	0.080	0.515	22.937487	-102.570130
T. Der. Sta. Mónica	11.00	1	2	2889	0.2	70.0	6.2	8.5	1.9	8.5	1.7	2.5	0.5	70.2	6.2	23.6	0.089	0.515	22.937536	-102.570206
T. Der. Sta. Mónica	11.00	3	1	2232	0.3	67.1	5.1	9.3	2.4	8.7	3.1	3.3	0.7	67.4	5.1	27.5	0.082	0.520	22.950453	-102.559123
T. Der. Sta. Mónica	11.00	3	2	2414	0.2	64.3	5.5	10.1	2.3	9.9	3.5	3.6	0.6	64.5	5.5	30.0	0.094	0.520	22.950514	-102.559205
T. Izq. Villa de Cos	53.90	1	1	2754	0.6	63.4	6.7	10.8	2.4	8.5	2.0	4.8	0.8	64.0	6.7	29.3	0.083	0.505	23.263208	-102.334466
T. Izq. Villa de Cos	53.90	1	2	2696	0.4	59.2	7.1	12.6	2.6	9.8	2.3	5.2	0.8	59.6	7.1	33.3	0.084	0.505	23.263208	-102.334466
T. Izq. Villa de Cos	53.90	3	1	2274	0.5	54.9	8.0	11.8	3.2	13.9	3.2	3.9	0.6	55.4	8.0	36.6	0.086	0.515	23.276816	-102.324585
T. Izq. Villa de Cos	53.90	3	2	2418	0.4	50.1	9.3	12.8	3.3	15.4	3.7	4.4	0.6	50.5	9.3	40.2	0.087	0.515	23.276816	-102.324585
Sierra Vieja	85.50	3	1	1535	1.7	46.8	10.0	13.3	3.1	16.5	2.6	5.2	0.8	48.5	10.0	41.5	0.073	0.502	23.504918	-102.122382
Sierra Vieja	85.50	3	2	1523	1.0	43.5	10.3	13.8	3.7	18.0	3.1	5.7	0.9	44.5	10.3	45.2	0.080	0.502	23.504918	-102.122382
T. Der. Majoma	144.50	3	1	1391	0.9	43.0	9.9	12.1	2.8	20.1	3.8	6.4	1.0	43.9	9.9	46.2	0.076	0.514	23.878018	-101.735541
T. Der. Majoma	144.50	3	2	1470	0.8	37.9	10.7	13.8	3.1	21.5	4.3	7.0	0.9	38.7	10.7	50.6	0.096	0.514	23.878018	-101.735541
T. Der. San Tiburcio	185.25	1	1	1375	0.4	44.4	8.9	11.5	2.9	21.5	3.3	6.1	1.0	44.8	8.9	46.3	0.081	0.515	24.157435	-101.495745
T. Der. San Tiburcio	185.25	1	2	1461	0.3	40.3	9.6	12.5	3.4	22.7	3.6	6.8	0.8	40.6	9.6	49.8	0.103	0.515	24.157435	-101.495745
T. Der. San Tiburcio	185.25	3	1	1707	0.6	50.4	7.4	17.5	2.7	13.4	2.6	4.6	0.8	51.0	7.4	41.6	0.078	0.524	24.159157	-101.494492
T. Der. San Tiburcio	185.25	3	2	1708	5.3	40.8	8.1	19.8	2.8	15.2	2.6	4.6	0.8	46.1	8.1	45.8	0.089	0.524	24.159157	-101.494492
T. Izq. Concepción del Oro	240.00	1	1	2327	0.9	55.3	5.7	17.8	3.0	10.6	2.1	4.0	0.6	56.2	5.7	38.1	0.082	0.516	24.611856	-101.369693
T. Izq. Concepción del Oro	240.00	1	2	2258	5.7	45.8	6.4	20.2	3.5	11.4	2.4	4.1	0.5	51.5	6.4	42.1	0.091	0.516	24.611856	-101.369693
T. Izq. Concepción del Oro	240.00	3	1	2275	0.5	60.6	5.8	12.2	3.5	11.9	1.8	3.2	0.5	61.1	5.8	33.1	0.085	0.509	24.627441	-101.375668
T. Izq. Concepción del Oro	240.00	3	2	2359	0.5	55.4	5.9	14.2	4.0	13.8	2.1	3.5	0.6	55.9	5.9	38.2	0.081	0.509	24.627441	-101.375668
Lim. Edos. Term. Zac. Ppia. Coah.	266.50																			
Agua Nueva	322.00	1	0	4673	2.4	77.9	5.9	6.0	2.3	3.3	0.9	0.4	0.9	80.3	5.9	13.8	0.077	0.502	25.180345	-101.094519
T. Der. La Trinidad	333.00	3	0	10474	0.4	79.7	6.4	6.0	2.1	3.0	1.2	0.3	0.9	80.1	6.4	13.5	0.092	0.507	25.291531	-101.084562
X. C. Libramiento de Saltillo	348.00	1	1	13331	0.9	83.8	5.9	5.8	0.9	1.9	0.5	0.1	0.2	84.7	5.9	9.4	0.090	0.510	25.368315	-101.015152
X. C. Libramiento de Saltillo	348.00	1	2	13509	1.1	82.3	6.4	6.2	1.1	2.1	0.5	0.1	0.2	83.4	6.4	10.2	0.095	0.510	25.368332	-101.015409
Saltillo	354.00	1	1	11572	1.5	84.5	6.0	5.7	0.3	1.2	0.6	0.1	0.1	86.0	6.0	8.0	0.109	0.522	25.388461	-101.005883

COAHUILA

5 CARR : Ent. Morelos - Saltillo

CLAVE: 00149

RUTA: MEX-054

AÑO: 2012

LUGAR	ESTACION				CLASIFICACION VEHICULAR EN PORCIENTO														COORDENADAS	
	KM	TE	SC	TDPA	M	A	B	C2	C3	T3S2	T3S3	T3S2R4	OTROS	A	B	C	K'	D	LATITUD	LONGITUD
Saltillo	354.00	1	2	12625	1.3	83.0	6.8	6.3	0.3	1.4	0.7	0.1	0.1	84.3	6.8	8.9	0.080	0.522	25.388514	-101.006095

6 CARR : Gregorio García - Francisco I. Madero

CLAVE: 00110

RUTA: MEX-040

AÑO: 2012

LUGAR	ESTACION				CLASIFICACION VEHICULAR EN PORCIENTO														COORDENADAS	
	KM	TE	SC	TDPA	M	A	B	C2	C3	T3S2	T3S3	T3S2R4	OTROS	A	B	C	K'	D	LATITUD	LONGITUD
T. C. Gómez Palacio - Tlahualillo	0.00																			
Lim. Edos. Term. Dgo. Ppia. Coah.	3.60																			
Francisco I. Madero	9.60	1	0	5845	1.4	85.6	1.5	6.9	1.6	1.7	0.6	0.5	0.2	87.0	1.5	11.5	0.099	0.510	25.772824	-103.287727

7 CARR : Huachichil - La Encantada

CLAVE: 05002

RUTA: MEX-057

AÑO: 2012

LUGAR	ESTACION				CLASIFICACION VEHICULAR EN PORCIENTO														COORDENADAS	
	KM	TE	SC	TDPA	M	A	B	C2	C3	T3S2	T3S3	T3S2R4	OTROS	A	B	C	K'	D	LATITUD	LONGITUD
T. C. Aut. Puerto México - Ojo Caliente	0.00	3	0	2153	1.4	66.0	7.0	6.5	2.9	10.4	2.9	2.1	0.8	67.4	7.0	25.6	0.078	0.519	25.230474	-100.825478
T. C. Ent. Morelos - Saltillo	41.00	1	0	2215	1.6	65.0	7.3	6.3	3.0	11.0	2.5	2.3	1.0	66.6	7.3	26.1	0.077	0.503	25.246500	-101.075323

8 CARR : Libramiento Allende - Nava

CLAVE: 05518

RUTA: MEX-057

AÑO: 2012

LUGAR	ESTACION				CLASIFICACION VEHICULAR EN PORCIENTO														COORDENADAS	
	KM	TE	SC	TDPA	M	A	B	C2	C3	T3S2	T3S3	T3S2R4	OTROS	A	B	C	K'	D	LATITUD	LONGITUD
T. C. Monclova - Piedras Negras	0.00	3	1	3162	0.3	62.5	1.4	13.8	2.4	11.7	4.6	3.3	0.0	62.8	1.4	35.8	0.099	0.509	28.327882	-100.885712
T. C. Monclova - Piedras Negras	0.00	3	2	3272	0.3	58.6	1.6	15.4	2.6	12.9	5.0	3.6	0.0	58.9	1.6	39.5	0.116	0.509	28.327902	-100.885891
X. Der. Allende - Izq. Morelos	6.06	3	1	4327	2.2	68.9	3.0	11.4	1.4	7.2	3.1	2.0	0.8	71.1	3.0	25.9	0.101	0.509	28.377149	-100.858934
X. Der. Allende - Izq. Morelos	6.06	3	2	4183	0.5	68.0	3.2	12.6	1.5	7.8	3.4	2.1	0.9	68.5	3.2	28.3	0.110	0.509	28.377264	-100.859039
T. C. Monclova - Piedras Negras	17.55	1	1	4079	1.1	66.2	2.5	14.5	1.9	7.0	3.7	2.6	0.5	67.3	2.5	30.2	0.117	0.512	28.433400	-100.772536
T. C. Monclova - Piedras Negras	17.55	1	2	3894	0.3	63.5	2.9	15.8	2.1	7.7	4.3	2.9	0.5	63.8	2.9	33.3	0.120	0.512	28.433597	-100.772504

9 CARR : Monclova - Piedras Negras

CLAVE: 05407

RUTA: MEX-057

AÑO: 2012

LUGAR	ESTACION				CLASIFICACION VEHICULAR EN PORCIENTO														COORDENADAS	
	KM	TE	SC	TDPA	M	A	B	C2	C3	T3S2	T3S3	T3S2R4	OTROS	A	B	C	K'	D	LATITUD	LONGITUD
Monclova	0.00	3	1	9166	0.8	84.5	3.4	5.9	0.8	1.4	1.9	0.3	1.0	85.3	3.4	11.3	0.087	0.503	26.955628	-101.411091
Monclova	0.00	3	2	9270	1.1	82.7	3.5	6.9	0.8	1.6	2.0	0.3	1.1	83.8	3.5	12.7	0.092	0.503	26.955628	-101.411091
T. Der. Libramiento de Monclova	10.80	3	1	3627	0.5	82.9	3.0	6.8	2.1	1.0	1.4	1.8	0.5	83.4	3.0	13.6	0.098	0.503	26.980196	-101.374397

COAHUILA

9 CARR: Monclova - Piedras Negras

CLAVE: 05407

RUTA: MEX-057

AÑO: 2012

LUGAR	ESTACION				CLASIFICACION VEHICULAR EN PORCIENTO													COORDENADAS		
	KM	TE	SC	TDPA	M	A	B	C2	C3	T3S2	T3S3	T3S2R4	OTROS	A	B	C	K'	D	LATITUD	LONGITUD
T. Der. Libramiento de Monclova	10.80	3	2	3584	0.3	81.7	3.4	7.1	2.3	1.0	1.5	2.1	0.6	82.0	3.4	14.6	0.101	0.503	26.980196	-101.374397
T. Der. Progreso	61.50	1	1	2718	3.8	58.5	2.3	17.0	2.6	8.6	2.4	3.8	1.0	62.3	2.3	35.4	0.102	0.501	27.386023	-101.215268
T. Der. Progreso	61.50	1	2	2727	0.1	57.6	2.6	19.6	3.1	9.3	2.5	4.2	1.0	57.7	2.6	39.7	0.111	0.501	27.386023	-101.215268
T. Izq. Palau	88.50	1	1	2798	0.4	62.5	3.1	15.2	2.5	9.3	2.6	3.7	0.7	62.9	3.1	34.0	0.096	0.504	27.636606	-101.182429
T. Izq. Palau	88.50	1	2	2757	3.0	57.7	3.6	15.9	2.9	9.7	2.7	3.9	0.6	60.7	3.6	35.7	0.125	0.504	27.636112	-101.182552
T. Izq. Palau	88.50	3	1	3176	0.2	70.1	3.2	8.2	2.1	9.6	3.0	2.9	0.7	70.3	3.2	26.5	0.093	0.503	27.643037	-101.184383
T. Izq. Palau	88.50	3	2	3219	1.6	65.8	3.7	9.1	2.5	10.2	3.3	3.2	0.6	67.4	3.7	28.9	0.108	0.503	27.643037	-101.184383
T. Der. Sabinas (2º Acceso)	115.00	1	1	5748	0.6	73.3	1.2	8.6	5.4	5.8	2.3	1.9	0.9	73.9	1.2	24.9	0.086	0.527	27.861951	-101.136095
T. Der. Sabinas (2º Acceso)	115.00	1	2	5157	0.6	70.0	1.4	9.6	6.0	6.9	2.3	2.2	1.0	70.6	1.4	28.0	0.085	0.527	27.861956	-101.136101
Agujita	118.85	1	1	11539	0.9	82.4	0.6	8.6	1.0	2.9	1.9	0.9	0.8	83.3	0.6	16.1	0.077	0.508	27.880329	-101.142753
Agujita	118.85	1	2	11171	0.8	80.9	0.8	9.5	1.1	3.1	2.0	0.9	0.9	81.7	0.8	17.5	0.081	0.508	27.880323	-101.142752
T. Izq. Nueva Rosita (1º Acceso)	126.30	3	0	4498	1.1	70.0	2.4	5.4	3.1	8.4	4.2	4.5	0.9	71.1	2.4	26.5	0.086	0.510	27.957666	-101.200200
T. Izq. Libramiento de Allende	182.00	1	0	4606	0.4	60.7	1.1	12.4	1.9	13.0	6.4	3.1	1.0	61.1	1.1	37.8	0.085	0.504	28.313225	-100.908628
Allende	187.20	3	1	4554	0.4	76.8	3.3	8.5	3.2	4.0	2.3	0.6	0.9	77.2	3.3	19.5	0.095	0.521	28.366447	-100.861698
Allende	187.20	3	2	4494	0.7	73.9	3.5	9.5	3.7	4.5	2.6	0.7	0.9	74.6	3.5	21.9	0.099	0.521	28.366447	-100.861697
Nava	206.85	1	1	2226	1.1	80.8	2.6	14.0	0.7	0.5	0.3	0.0	0.0	81.9	2.6	15.5	0.092	0.518	28.421054	-100.799088
Nava	206.85	1	2	2069	1.2	80.0	2.7	14.6	0.8	0.5	0.2	0.0	0.0	81.2	2.7	16.1	0.114	0.518	28.421278	-100.799564
Nava	206.85	3	1	5834	0.4	69.5	2.9	14.7	1.6	6.4	2.8	1.2	0.5	69.9	2.9	27.2	0.123	0.502	28.449936	-100.747822
Nava	206.85	3	2	5880	0.3	65.5	3.0	17.3	1.8	7.0	3.2	1.4	0.5	65.8	3.0	31.2	0.124	0.502	28.450069	-100.747975
T. Der. Guerrero	240.28	1	1	7725	0.9	83.5	1.2	7.8	1.6	3.0	0.9	0.6	0.5	84.4	1.2	14.4	0.087	0.508	28.639957	-100.559491
T. Der. Guerrero	240.28	1	2	7494	0.9	82.2	1.2	8.3	1.8	3.5	1.0	0.6	0.5	83.1	1.2	15.7	0.103	0.508	28.640047	-100.559634
Piedras Negras	248.00																			

10 CARR: Monclova - San Pedro de Las Colonias

CLAVE: 05062

RUTA: MEX-030

AÑO: 2012

LUGAR	ESTACION				CLASIFICACION VEHICULAR EN PORCIENTO													COORDENADAS		
	KM	TE	SC	TDPA	M	A	B	C2	C3	T3S2	T3S3	T3S2R4	OTROS	A	B	C	K'	D	LATITUD	LONGITUD
Monclova	0.00																			
Frontera	2.00	3	1	8413	1.3	87.3	2.2	4.7	1.1	1.7	0.8	0.4	0.5	88.6	2.2	9.2	0.100	0.509	26.959969	-101.462362
Frontera	2.00	3	2	8128	1.6	85.9	2.4	5.4	1.2	1.8	0.8	0.4	0.5	87.5	2.4	10.1	0.089	0.509	26.959969	-101.462362
8 de Enero	11.00	3	1	5827	0.9	85.9	2.6	4.6	0.9	2.4	0.9	0.9	0.9	86.8	2.6	10.6	0.100	0.500	27.010027	-101.502073
8 de Enero	11.00	3	2	5822	1.1	84.2	2.7	5.0	1.1	2.7	1.1	1.1	1.0	85.3	2.7	12.0	0.085	0.500	27.010027	-101.502073
Nadadores	27.00	3	1	1952	0.9	74.5	4.3	7.4	2.9	5.8	1.9	1.9	0.4	75.4	4.3	20.3	0.137	0.518	27.031352	-101.602167
Nadadores	27.00	3	2	2102	1.0	71.0	5.0	8.4	3.0	6.8	2.1	2.1	0.6	72.0	5.0	23.0	0.179	0.518	27.031352	-101.602167
Sacramento	45.27	1	1	1621	0.4	85.9	2.4	2.8	1.5	3.1	1.6	1.6	0.7	86.3	2.4	11.3	0.121	0.506	27.008197	-101.719399

COAHUILA

10 CARR: Monclova - San Pedro de Las Colonias

CLAVE: 05062

RUTA: MEX-030

AÑO: 2012

LUGAR	ESTACION				CLASIFICACION VEHICULAR EN PORCIENTO													COORDENADAS		
	KM	TE	SC	TDPA	M	A	B	C2	C3	T3S2	T3S3	T3S2R4	OTROS	A	B	C	K'	D	LATITUD	LONGITUD
Sacramento	45.27	1	2	1658	1.0	83.9	2.6	3.1	1.6	3.5	1.6	1.9	0.8	84.9	2.6	12.5	0.152	0.506	27.008197	-101.719399
Cuatro Ciénegas	80.15	3	0	1042	1.3	77.3	3.0	4.5	3.4	4.2	2.1	3.2	1.0	78.6	3.0	18.4	0.092	0.520	26.979770	-102.066022
San Pedro de Las Colonias	267.00	1	1	1307	2.4	59.2	2.9	12.4	6.6	9.2	2.7	3.6	1.0	61.6	2.9	35.5	0.103	0.517	25.792583	-102.979317
San Pedro de Las Colonias	267.00	1	2	1383	6.6	50.4	3.2	13.5	7.0	10.9	2.8	4.4	1.2	57.0	3.2	39.8	0.125	0.517	25.792583	-102.979317

11 CARR: Monterrey - Castaños

CLAVE: 00128

RUTA: MEX-053

AÑO: 2012

LUGAR	ESTACION				CLASIFICACION VEHICULAR EN PORCIENTO													COORDENADAS		
	KM	TE	SC	TDPA	M	A	B	C2	C3	T3S2	T3S3	T3S2R4	OTROS	A	B	C	K'	D	LATITUD	LONGITUD
T. C. Monterrey - Nuevo Laredo	0.00	3	0	14411	2.5	74.2	5.0	5.9	5.2	3.5	1.7	1.2	0.8	76.7	5.0	18.3	0.076	0.500	25.808331	-100.282381
X. C. Libramiento Noroeste de Monterrey	3.46	3	1	10222	5.4	67.8	4.1	7.1	5.8	4.4	3.2	1.4	0.8	73.2	4.1	22.7	0.096	0.505	25.832066	-100.307918
X. C. Libramiento Noroeste de Monterrey	3.46	3	2	10033	5.7	64.0	4.5	8.2	6.4	5.0	3.7	1.6	0.9	69.7	4.5	25.8	0.091	0.505	25.831987	-100.308056
T. Der. Villa del Carmen	13.80	1	1	6774	0.4	76.7	3.8	6.5	2.6	4.9	2.8	1.7	0.6	77.1	3.8	19.1	0.090	0.506	25.896356	-100.352010
T. Der. Villa del Carmen	13.80	1	2	6615	0.5	74.8	4.1	7.0	2.8	5.2	3.1	1.9	0.6	75.3	4.1	20.6	0.096	0.506	25.896356	-100.352010
T. Izq. Hidalgo	24.78	1	0	12874	0.8	75.3	3.2	7.4	2.1	5.2	2.7	2.1	1.2	76.1	3.2	20.7	0.084	0.549	25.953746	-100.422679
T. Izq. Hidalgo	24.78	3	0	8483	0.7	67.7	4.1	9.0	2.6	8.5	4.0	2.5	0.9	68.4	4.1	27.5	0.072	0.503	25.990828	-100.457488
T. Izq. Mina	34.75	1	0	7136	1.1	67.2	4.4	7.9	3.0	8.7	4.4	2.5	0.8	68.3	4.4	27.3	0.070	0.510	26.000739	-100.515547
T. Izq. Espinazo	91.90	1	0	3377	5.0	58.9	3.8	9.5	1.6	8.8	5.7	5.9	0.8	63.9	3.8	32.3	0.092	0.523	26.362470	-100.878330
T. Izq. Espinazo	91.90	3	0	3246	1.0	67.5	4.1	6.0	3.3	8.3	4.6	4.1	1.1	68.5	4.1	27.4	0.076	0.514	26.365698	-100.883665
Lim. Edos. Term. N. L. Ppia. Coah.	115.90																			
T. C. Saltillo - Monclova	155.90	1	1	2191	4.4	74.1	2.1	3.3	2.0	5.1	5.3	3.0	0.7	78.5	2.1	19.4	0.113	0.501	26.693472	-101.383820
T. C. Saltillo - Monclova	155.90	1	2	2179	3.3	74.0	2.3	3.6	2.1	5.3	5.6	3.2	0.6	77.3	2.3	20.4	0.088	0.501	26.692913	-101.383565

12 CARR: Morelos - Cd. Acuña

CLAVE: 05029

RUTA: MEX-029

AÑO: 2012

LUGAR	ESTACION				CLASIFICACION VEHICULAR EN PORCIENTO													COORDENADAS		
	KM	TE	SC	TDPA	M	A	B	C2	C3	T3S2	T3S3	T3S2R4	OTROS	A	B	C	K'	D	LATITUD	LONGITUD
Morelos	0.00	3	1	2785	0.8	79.0	2.5	11.9	1.0	3.2	1.1	0.3	0.2	79.8	2.5	17.7	0.093	0.507	28.418799	-100.890924
Morelos	0.00	3	2	2863	0.8	77.8	2.2	12.6	1.1	3.6	1.2	0.4	0.3	78.6	2.2	19.2	0.094	0.507	28.418798	-100.890916
San Carlos	69.00	1	0	1538	0.2	64.4	2.5	21.4	1.6	7.6	1.0	0.9	0.4	64.6	2.5	32.9	0.102	0.502	29.017799	-100.904784
T. Der. Piedras Negras	87.00	3	1	4895	1.6	70.2	3.3	20.3	1.4	2.1	0.6	0.2	0.3	71.8	3.3	24.9	0.080	0.503	29.297351	-100.915268
T. Der. Piedras Negras	87.00	3	2	4835	1.2	69.0	3.5	21.6	1.4	2.2	0.6	0.2	0.3	70.2	3.5	26.3	0.089	0.503	29.297282	-100.915388
Cd. Acuña	104.00	1	1	5788	1.2	77.0	1.5	18.1	0.6	0.8	0.4	0.1	0.3	78.2	1.5	20.3	0.083	0.530	29.304414	-100.923585
Cd. Acuña	104.00	1	2	6522	1.2	76.1	1.5	18.8	0.7	1.0	0.4	0.1	0.2	77.3	1.5	21.2	0.084	0.530	29.304415	-100.923563

COAHUILA

13 CARR: Nueva Rosita - Boquillas del Carmen

CLAVE: 05028

RUTA: MEX-053

AÑO: 2012

LUGAR	ESTACION				CLASIFICACION VEHICULAR EN PORCIENTO														COORDENADAS	
	KM	TE	SC	TDPA	M	A	B	C2	C3	T3S2	T3S3	T3S2R4	OTROS	A	B	C	K'	D	LATITUD	LONGITUD
Nueva Rosita	0.00	3	1	5258	1.5	79.9	0.4	11.0	1.5	2.1	2.3	0.5	0.8	81.4	0.4	18.2	0.091	0.507	27.947546	-101.242860
Nueva Rosita	0.00	3	2	5104	1.6	78.0	0.4	12.3	1.6	2.3	2.5	0.5	0.8	79.6	0.4	20.0	0.081	0.507	27.947729	-101.243087
Palau	25.00	1	1	3494	0.9	74.4	3.3	9.6	2.8	2.8	4.7	0.6	0.9	75.3	3.3	21.4	0.098	0.507	27.888467	-101.398573
Palau	25.00	1	2	3391	1.0	72.0	3.8	9.8	3.1	3.1	5.4	0.7	1.1	73.0	3.8	23.2	0.100	0.507	27.888586	-101.398714
Palau	25.00	3	1	4548	0.5	80.8	0.5	11.3	3.2	1.7	1.1	0.4	0.5	81.3	0.5	18.2	0.083	0.503	27.887723	-101.430986
Palau	25.00	3	2	4606	1.0	79.2	0.5	12.0	3.5	1.7	1.2	0.4	0.5	80.2	0.5	19.3	0.081	0.503	27.887736	-101.430990
Melchor Múzquiz	35.00	3	0	3018	1.5	74.4	1.1	16.4	2.1	1.9	2.1	0.2	0.3	75.9	1.1	23.0	0.082	0.502	27.895578	-101.532012
Boquillas del Carmen	250.00																			

14 CARR: Ojo Caliente - Santa Cruz

CLAVE: 05007

RUTA: MEX-057

AÑO: 2012

LUGAR	ESTACION				CLASIFICACION VEHICULAR EN PORCIENTO														COORDENADAS	
	KM	TE	SC	TDPA	M	A	B	C2	C3	T3S2	T3S3	T3S2R4	OTROS	A	B	C	K'	D	LATITUD	LONGITUD
T. C. Saltillo - Monterrey	0.00	3	0	5127	0.8	59.8	3.1	15.6	2.4	8.9	4.6	4.1	0.7	60.6	3.1	36.3	0.091	0.513	25.597934	-100.893416
T. C. Saltillo - Monclova	34.00	1	0	2846	1.5	48.1	4.7	27.2	2.2	6.9	3.2	5.5	0.7	49.6	4.7	45.7	0.106	0.501	25.786599	-101.106899

15 CARR: Piedras Negras - Cd. Acuña

CLAVE: 05061

RUTA: MEX-002

AÑO: 2012

LUGAR	ESTACION				CLASIFICACION VEHICULAR EN PORCIENTO														COORDENADAS	
	KM	TE	SC	TDPA	M	A	B	C2	C3	T3S2	T3S3	T3S2R4	OTROS	A	B	C	K'	D	LATITUD	LONGITUD
Piedras Negras	0.00	3	1	2295	0.2	74.2	2.8	15.7	2.4	2.8	1.3	0.3	0.3	74.4	2.8	22.8	0.107	0.503	28.730841	-100.575232
Piedras Negras	0.00	3	2	2324	0.3	70.6	3.0	18.1	2.8	3.2	1.6	0.2	0.2	70.9	3.0	26.1	0.096	0.503	28.730869	-100.575277
T. C. Morelos - Cd. Acuña	83.30	1	0	2760	0.4	69.3	4.2	18.8	3.3	2.4	0.9	0.4	0.3	69.7	4.2	26.1	0.089	0.501	29.291661	-100.910927

16 CARR: Piedras Negras - Nuevo Laredo

CLAVE: 00503

RUTA: MEX-002

AÑO: 2012

LUGAR	ESTACION				CLASIFICACION VEHICULAR EN PORCIENTO														COORDENADAS	
	KM	TE	SC	TDPA	M	A	B	C2	C3	T3S2	T3S3	T3S2R4	OTROS	A	B	C	K'	D	LATITUD	LONGITUD
T. C. Monclova - Piedras Negras	0.00	3	1	3618	2.3	65.7	1.3	21.0	3.0	4.9	0.7	0.8	0.3	68.0	1.3	30.7	0.090	0.509	28.636706	-100.550085
T. C. Monclova - Piedras Negras	0.00	3	2	3756	1.2	64.2	1.4	22.2	3.3	5.5	0.8	1.0	0.4	65.4	1.4	33.2	0.095	0.509	28.636715	-100.550073
El Saucito	16.90	3	0	1270	1.8	64.2	2.3	17.0	2.6	6.5	1.8	2.8	1.0	66.0	2.3	31.7	0.097	0.504	28.502029	-100.467334
Guerrero	42.00	3	0	871	0.3	53.0	4.5	19.5	4.0	11.1	0.9	6.2	0.5	53.3	4.5	42.2	0.102	0.508	28.307355	-100.364292
Lim. Edos. Term. Coah. Ppia. N. L.	124.40																			
T. C. Monclova - Colombia	134.00	3	0	2568	0.7	72.6	2.2	10.6	3.1	8.3	0.6	1.7	0.2	73.3	2.2	24.5	0.098	0.506	27.687564	-99.776320
Lim. Edos. Term. N. L. Ppia. Tamps.	138.20																			

COAHUILA

16 CARR: Piedras Negras - Nuevo Laredo

CLAVE: 00503

RUTA: MEX-002

AÑO: 2012

LUGAR	ESTACION				CLASIFICACION VEHICULAR EN PORCIENTO										COORDENADAS					
	KM	TE	SC	TDPA	M	A	B	C2	C3	T3S2	T3S3	T3S2R4	OTROS	A	B	C	K'	D	LATITUD	LONGITUD
T. Der. Libramiento de Nuevo Laredo	157.70	1	1	3961	0.4	46.5	2.4	5.4	10.9	31.5	1.2	1.1	0.6	46.9	2.4	50.7	0.109	0.515	27.571852	-99.599476
T. Der. Libramiento de Nuevo Laredo	157.70	1	2	4208	1.1	38.6	2.5	5.9	11.3	37.5	1.3	1.2	0.6	39.7	2.5	57.8	0.105	0.515	27.571949	-99.599494
Nuevo Laredo	175.00	1	1	8103	2.6	60.8	2.2	27.8	0.1	2.3	1.4	0.8	2.0	63.4	2.2	34.4	0.107	0.580	27.543858	-99.576308
Nuevo Laredo	175.00	1	2	8153	1.8	51.6	2.7	22.6	5.2	11.6	1.6	0.8	2.1	53.4	2.7	43.9	0.114	0.580	27.543486	-99.576025

17 CARR: Saltillo - Monclova

CLAVE: 05406

RUTA: MEX-057

AÑO: 2012

LUGAR	ESTACION				CLASIFICACION VEHICULAR EN PORCIENTO										COORDENADAS					
	KM	TE	SC	TDPA	M	A	B	C2	C3	T3S2	T3S3	T3S2R4	OTROS	A	B	C	K'	D	LATITUD	LONGITUD
Saltillo	0.00																			
T. Der. Ramos Arizpe	13.00	1	0	3430	2.4	82.5	4.8	6.1	1.1	1.1	0.7	0.4	0.9	84.9	4.8	10.3	0.087	0.500	25.527235	-101.002370
T. Der. Ramos Arizpe	13.00	3	0	1536	0.6	80.6	3.5	3.7	2.8	4.2	2.6	1.5	0.5	81.2	3.5	15.3	0.115	0.502	25.529080	-101.005389
T. Der. Monterrey	164.79	1	0	3007	0.9	79.6	3.3	3.7	3.1	4.0	3.0	1.5	0.9	80.5	3.3	16.2	0.080	0.508	26.685386	-101.387503
T. Der. Monterrey	164.79	3	1	3350	0.3	81.2	2.9	3.8	2.6	4.3	2.8	1.5	0.6	81.5	2.9	15.6	0.107	0.514	26.704873	-101.391449
T. Der. Monterrey	164.79	3	2	3538	0.2	79.2	3.2	4.2	3.1	4.6	3.2	1.6	0.7	79.4	3.2	17.4	0.147	0.514	26.704873	-101.391449
T. Der. Libramiento de Castaños (1º Acceso)	175.20	1	1	7398	1.4	80.5	2.9	3.9	2.1	3.7	2.9	1.8	0.8	81.9	2.9	15.2	0.087	0.502	26.779301	-101.416378
T. Der. Libramiento de Castaños (1º Acceso)	175.20	1	2	7341	1.1	79.6	3.0	4.1	2.3	4.1	2.9	1.9	1.0	80.7	3.0	16.3	0.092	0.502	26.779301	-101.416378
T. Der. Libramiento de Castaños (2º Acceso)	177.10	3	1	8095	0.9	81.6	1.7	3.8	2.3	4.3	2.8	1.9	0.7	82.5	1.7	15.8	0.077	0.505	26.803042	-101.421409
T. Der. Libramiento de Castaños (2º Acceso)	177.10	3	2	8271	0.9	79.4	2.0	4.3	2.5	4.8	3.1	2.2	0.8	80.3	2.0	17.7	0.087	0.505	26.803042	-101.421409
Monclova	192.00	1	1	15934	1.4	82.7	1.2	4.5	2.1	3.1	3.2	1.0	0.8	84.1	1.2	14.7	0.077	0.501	26.863182	-101.427275
Monclova	192.00	1	2	15991	1.3	80.8	1.4	5.3	2.4	3.3	3.7	1.0	0.8	82.1	1.4	16.5	0.075	0.501	26.863182	-101.427275

18 CARR: Saltillo - Monterrey

CLAVE: 00087

RUTA: MEX-040

AÑO: 2012

LUGAR	ESTACION				CLASIFICACION VEHICULAR EN PORCIENTO										COORDENADAS					
	KM	TE	SC	TDPA	M	A	B	C2	C3	T3S2	T3S3	T3S2R4	OTROS	A	B	C	K'	D	LATITUD	LONGITUD
T. C. Saltillo - Arteaga	0.00																			
T. Izq. Zinacamex	4.25	3	1	35479	0.6	86.9	3.4	4.2	0.9	1.2	1.7	0.3	0.8	87.5	3.4	9.1	0.097	0.514	25.481019	-100.973093
T. Izq. Zinacamex	4.25	3	2	33539	0.7	85.8	3.6	4.7	1.0	1.3	1.8	0.3	0.8	86.5	3.6	9.9	0.097	0.514	25.481126	-100.973232
Ramos Arizpe	11.30	1	1	24928	0.7	86.9	2.8	5.9	0.8	1.3	1.0	0.3	0.3	87.6	2.8	9.6	0.092	0.507	25.516160	-100.957599
Ramos Arizpe	11.30	1	2	24278	1.4	84.8	3.2	6.3	1.0	1.5	1.2	0.3	0.3	86.2	3.2	10.6	0.084	0.507	25.516160	-100.957599
T. Der. Aeropuerto	13.00	3	1	21326	3.4	74.9	4.6	8.1	3.1	3.0	1.5	0.6	0.8	78.3	4.6	17.1	0.114	0.505	25.554431	-100.928008
T. Der. Aeropuerto	13.00	3	2	21762	1.0	74.5	5.3	9.0	3.5	3.3	1.8	0.8	0.8	75.5	5.3	19.2	0.108	0.505	25.554431	-100.928008
T. Der. Libramiento J.L.P.	16.00	3	1	16482	0.5	74.6	5.1	9.4	2.4	6.3	0.9	0.7	0.1	75.1	5.1	19.8	0.147	0.518	25.565399	-100.914682
T. Der. Libramiento J.L.P.	16.00	3	2	17694	0.3	71.2	5.7	11.0	2.7	7.2	1.0	0.8	0.1	71.5	5.7	22.8	0.126	0.518	25.565399	-100.914682

COAHUILA

18 CARR: Saltillo - Monterrey

CLAVE: 00087

RUTA: MEX-040

AÑO: 2012

LUGAR	ESTACION				CLASIFICACION VEHICULAR EN PORCIENTO													COORDENADAS		
	KM	TE	SC	TDPA	M	A	B	C2	C3	T3S2	T3S3	T3S2R4	OTROS	A	B	C	K'	D	LATITUD	LONGITUD
Ojo Caliente	26.30	1	1	13946	2.4	54.5	4.3	9.4	2.4	21.1	2.8	2.5	0.6	56.9	4.3	38.8	0.067	0.515	25.610680	-100.844097
Ojo Caliente	26.30	1	2	13115	0.3	53.9	4.5	10.3	2.8	21.7	3.1	2.8	0.6	54.2	4.5	41.3	0.072	0.515	25.613159	-100.845113
Lim. Edos. Term. Coah. Ppia. N. L.	33.00																			
T. Izq. Libramiento Noroeste de Monterrey	54.00	1	1	14778	0.4	51.5	3.4	9.2	2.7	24.4	4.0	3.5	0.9	51.9	3.4	44.7	0.073	0.530	25.698783	-100.562730
T. Izq. Libramiento Noroeste de Monterrey	54.00	1	2	15135	2.0	44.7	4.1	9.9	3.0	27.0	4.2	4.2	0.9	46.7	4.1	49.2	0.064	0.530	25.698298	-100.562922
T. Der. Santa Catarina (1º Acceso)	62.46	1	1	23384	1.0	80.2	3.5	8.2	1.4	3.0	1.3	0.8	0.6	81.2	3.5	15.3	0.086	0.506	25.687060	-100.493817
T. Der. Santa Catarina (1º Acceso)	62.46	1	2	23966	0.6	77.6	4.1	9.6	1.6	3.5	1.4	1.0	0.6	78.2	4.1	17.7	0.077	0.506	25.686857	-100.493732
Ppia. Monterrey	79.20	1	1	40731	0.7	77.4	5.7	7.5	1.2	2.4	3.7	0.7	0.7	78.1	5.7	16.2	0.068	0.510	25.674637	-100.424913
Ppia. Monterrey	79.20	1	2	42314	0.4	75.1	6.2	8.4	1.4	2.7	4.2	0.8	0.8	75.5	6.2	18.3	0.077	0.510	25.674473	-100.424900

19 CARR: Saltillo - Torreón

CLAVE: 05086

RUTA: MEX-040

AÑO: 2012

LUGAR	ESTACION				CLASIFICACION VEHICULAR EN PORCIENTO													COORDENADAS		
	KM	TE	SC	TDPA	M	A	B	C2	C3	T3S2	T3S3	T3S2R4	OTROS	A	B	C	K'	D	LATITUD	LONGITUD
Saltillo	0.00																			
T. Der. Monclova	6.10	3	1	4250	0.7	72.1	4.0	16.6	2.2	2.8	0.7	0.6	0.3	72.8	4.0	23.2	0.096	0.517	25.455255	-101.039378
T. Der. Monclova	6.10	3	2	4169	0.8	68.5	4.5	18.6	2.4	3.3	0.9	0.7	0.3	69.3	4.5	26.2	0.089	0.517	25.455255	-101.039378
T. Izq. General Cepeda	44.14	1	0	4099	0.3	52.1	3.3	15.9	3.0	16.0	5.5	3.1	0.8	52.4	3.3	44.3	0.085	0.506	25.504537	-101.374808
T. Izq. General Cepeda	44.14	3	0	3442	0.8	47.5	6.2	15.1	2.6	16.1	7.2	3.7	0.8	48.3	6.2	45.5	0.095	0.523	25.512102	-101.382070
T. Der. Estación Marte	91.20	1	0	2617	0.2	36.5	4.2	11.6	4.7	27.2	9.7	4.8	1.1	36.7	4.2	59.1	0.082	0.502	25.658898	-101.764712
Ent. Paila	127.90	1	1	3631	0.9	56.9	4.3	9.0	2.7	15.7	4.8	5.0	0.7	57.8	4.3	37.9	0.083	0.504	25.649754	-102.140164
Ent. Paila	127.90	1	2	3578	0.8	52.1	4.9	9.6	2.7	17.8	5.5	5.9	0.7	52.9	4.9	42.2	0.078	0.504	25.649754	-102.140164
T. Der. San Pedro de Las Colonias (La Cuchilla)	204.58	1	1	2698	0.6	48.0	4.9	8.9	2.6	21.3	5.9	6.9	0.9	48.6	4.9	46.5	0.099	0.510	25.625558	-102.870775
T. Der. San Pedro de Las Colonias (La Cuchilla)	204.58	1	2	2587	0.5	44.7	5.6	9.3	2.9	22.5	6.2	7.4	0.9	45.2	5.6	49.2	0.094	0.510	25.631895	-102.867844
Emiliano Zapata	221.68	1	0	1908	0.6	32.3	3.0	12.9	5.0	30.1	10.2	4.8	1.1	32.9	3.0	64.1	0.072	0.502	25.495175	-102.943159
Emiliano Zapata	221.68	3	0	2499	0.5	43.7	3.7	13.1	4.2	22.5	7.7	3.6	1.0	44.2	3.7	52.1	0.073	0.506	25.488950	-102.953542
T. Der. Libramiento de Matamoros (1º Acceso)	246.80	1	0	5872	2.4	61.1	4.4	13.0	2.6	10.7	3.5	1.6	0.7	63.5	4.4	32.1	0.082	0.503	25.526298	-103.212020
T. Der. Libramiento de Matamoros (1º Acceso)	246.80	3	1	3644	3.7	79.5	3.5	11.0	0.9	0.7	0.5	0.1	0.1	83.2	3.5	13.3	0.084	0.501	25.527997	-103.218856
T. Der. Libramiento de Matamoros (1º Acceso)	246.80	3	2	3658	3.5	78.3	3.9	11.7	1.0	0.8	0.6	0.1	0.1	81.8	3.9	14.3	0.085	0.501	25.527997	-103.218856
Matamoros	252.80	3	1	8529	2.6	91.6	1.0	3.0	0.1	0.7	0.8	0.0	0.2	94.2	1.0	4.8	0.085	0.519	25.534818	-103.247522
Matamoros	252.80	3	2	8381	2.9	91.0	1.1	3.1	0.1	0.7	0.9	0.0	0.2	93.9	1.1	5.0	0.084	0.519	25.534818	-103.247522
T. Der. Libramiento de Matamoros (2º Acceso)	253.12	3	1	11111	2.0	74.5	3.7	8.4	1.5	5.8	1.9	1.5	0.7	76.5	3.7	19.8	0.076	0.504	25.535328	-103.261886
T. Der. Libramiento de Matamoros (2º Acceso)	253.12	3	2	11291	2.3	72.5	4.4	8.5	1.6	6.0	2.1	1.9	0.7	74.8	4.4	20.8	0.083	0.504	25.535328	-103.261886
T. Der. Libramiento de Torreón	264.50	3	1	32860	1.2	87.4	1.4	2.6	0.3	2.5	3.4	0.5	0.7	88.6	1.4	10.0	0.074	0.539	25.535239	-103.376478
T. Der. Libramiento de Torreón	264.50	3	2	28111	1.3	85.5	1.6	3.0	0.3	2.8	4.0	0.6	0.9	86.8	1.6	11.6	0.069	0.539	25.535239	-103.376478

COAHUILA

19 CARR : Saltillo - Torreón

CLAVE: 05086

RUTA: MEX-040

AÑO : 2012

LUGAR	ESTACION	CLASIFICACION VEHICULAR EN PORCIENTO													COORDENADAS							
		KM	TE	SC	TDPA	M	A	B	C2	C3	T3S2	T3S3	T3S2R4	OTROS	A	B	C	K'	D	LATITUD	LONGITUD	
Torreón	291.00																					

20 CARR : Libramiento Norponiente de Saltillo (Cuota)

CLAVE: 05022

RUTA: MEX-040D

AÑO : 2012

LUGAR	ESTACION	CLASIFICACION VEHICULAR EN PORCIENTO													COORDENADAS					
		KM	TE	SC	TDPA	M	A	B	C2	C3	T3S2	T3S3	T3S2R4	OTROS	A	B	C	K'	D	LATITUD
T. C. Saltillo - Torreón	0.00	3	0	4061	0.2	32.1	5.6	5.2	4.3	34.2	7.6	9.9	0.9	32.3	5.6	62.1	0.064	0.512	25.460088	-101.058137
Ojo Caliente	46.21	1	0	4404	0.3	34.1	5.5	6.3	3.2	33.9	6.2	9.5	1.0	34.4	5.5	60.1	0.069	0.511	25.609269	-100.917750

21 CARR : Libramiento Oriente de Saltillo (Cuota)

CLAVE: 00115

RUTA: MEX-057D

AÑO : 2012

LUGAR	ESTACION	CLASIFICACION VEHICULAR EN PORCIENTO													COORDENADAS							
		KM	TE	SC	TDPA	M	A	B	C2	C3	T3S2	T3S3	T3S2R4	OTROS	A	B	C	K'	D	LATITUD	LONGITUD	
Ent. La Carbonera	0.00																					
Caseta de Cobro Carbonera	12.30	2	1	2033	0.0	32.2	3.1	5.5	4.8	32.4	8.2	11.4	2.4	32.2	3.1	64.7	0.072	0.500	25.516223	-100.866625		
Caseta de Cobro Carbonera	12.30	2	2	2032	0.0	32.2	3.1	5.5	4.8	32.4	8.2	11.4	2.4	32.2	3.1	64.7	0.072	0.500	25.516223	-100.866625		
Caseta de Cobro Carbonera	12.30	3	1	6280	0.0	28.9	5.8	8.3	3.7	41.9	4.5	6.2	0.7	28.9	5.8	65.3	0.077	0.513	25.518712	-100.866261		
Caseta de Cobro Carbonera	12.30	3	2	6626	0.0	29.5	5.4	6.1	3.9	42.8	4.6	6.9	0.8	29.5	5.4	65.1	0.067	0.513	25.518310	-100.866087		
T. C. Saltillo - Monterrey	21.00																					

22 CARR : Puerto México - La Carbonera (Cuota)

CLAVE: 00115

RUTA: MEX-057D

AÑO : 2012

LUGAR	ESTACION	CLASIFICACION VEHICULAR EN PORCIENTO													COORDENADAS							
		KM	TE	SC	TDPA	M	A	B	C2	C3	T3S2	T3S3	T3S2R4	OTROS	A	B	C	K'	D	LATITUD	LONGITUD	
Ent. Puerto México	202.00																					
Caseta de Cobro Los Chorros	203.64	2	1	5234	0.0	34.4	6.1	3.9	2.4	41.4	3.9	6.9	1.0	34.4	6.1	59.5	0.076	0.500	25.186795	-100.732080		
Caseta de Cobro Los Chorros	203.64	2	2	5233	0.0	34.4	6.1	3.9	2.4	41.4	3.9	6.9	1.0	34.4	6.1	59.5	0.076	0.500	25.186795	-100.732080		
Lim. Edos. Term. N. L. Ppia. Coah.	204.07																					
Lim. Edos. Term. Coah. Ppia. N. L.	204.50																					
Lim. Edos. Term. N. L. Ppia. Coah.	205.76																					
T. Der. San Antonio de Las Alazanas	224.94	1	1	6711	0.1	33.2	5.4	6.8	4.4	39.5	4.3	5.5	0.8	33.3	5.4	61.3	0.078	0.515	25.343524	-100.794665		
T. Der. San Antonio de Las Alazanas	224.94	1	2	6779	0.1	35.1	5.8	7.4	4.9	36.7	3.9	5.1	1.0	35.2	5.8	59.0	0.072	0.515	25.343522	-100.794707		
T. Der. San Antonio de Las Alazanas	224.94	3	1	7536	0.1	33.5	6.2	7.1	4.5	38.6	4.2	5.2	0.6	33.6	6.2	60.2	0.082	0.502	25.351830	-100.794379		
T. Der. San Antonio de Las Alazanas	224.94	3	2	7609	0.1	30.2	6.6	7.7	4.8	39.8	4.4	5.8	0.6	30.3	6.6	63.1	0.070	0.502	25.351840	-100.794476		
Los Lirios	226.94	3	1	8546	0.0	32.5	5.5	8.9	3.4	40.3	3.7	5.0	0.7	32.5	5.5	62.0	0.075	0.504	25.392639	-100.796663		

COAHUILA

22 CARR: Puerto México - La Carbonera (Cuota)

CLAVE: 00115

RUTA: MEX-057D

AÑO: 2012

LUGAR	ESTACION				CLASIFICACION VEHICULAR EN PORCIENTO														COORDENADAS	
	KM	TE	SC	TDPA	M	A	B	C2	C3	T3S2	T3S3	T3S2R4	OTROS	A	B	C	K'	D	LATITUD	LONGITUD
Los Lirios	226.94	3	2	8674	0.0	31.0	5.4	8.2	3.4	41.9	3.8	5.4	0.9	31.0	5.4	63.6	0.080	0.504	25.392635	-100.796553
Ent. La Carbonera	239.06																			

23 CARR: Saltillo - Monterrey (Cuota)

CLAVE: 00087

RUTA: MEX-040D

AÑO: 2012

LUGAR	ESTACION				CLASIFICACION VEHICULAR EN PORCIENTO														COORDENADAS	
	KM	TE	SC	TDPA	M	A	B	C2	C3	T3S2	T3S3	T3S2R4	OTROS	A	B	C	K'	D	LATITUD	LONGITUD
Ojo Caliente	46.21	3	1	2150	0.1	42.3	5.1	5.7	2.8	29.9	5.1	8.3	0.7	42.4	5.1	52.5	0.084	0.546	25.617809	-100.905908
Ojo Caliente	46.21	3	2	2324	0.0	37.7	5.5	6.4	3.0	32.1	5.3	9.2	0.8	37.7	5.5	56.8	0.072	0.546	25.617722	-100.905812
T. Izq. Anillo Periférico de Monterrey (Cuota)	82.00	1	1	5695	0.1	72.0	4.2	4.6	1.1	11.8	1.6	3.8	0.8	72.1	4.2	23.7	0.091	0.535	25.698292	-100.602033
T. Izq. Anillo Periférico de Monterrey (Cuota)	82.00	1	2	4946	0.1	69.1	4.8	5.2	1.1	13.2	1.7	4.0	0.8	69.2	4.8	26.0	0.086	0.535	25.698141	-100.602025
T. Izq. Anillo Periférico de Monterrey (Cuota)	82.00	3	1	2560	0.2	80.3	6.4	12.7	0.2	0.2	0.0	0.0	0.0	80.5	6.4	13.1	0.104	0.523	25.690774	-100.557941
T. Izq. Anillo Periférico de Monterrey (Cuota)	82.00	3	2	2530	0.2	77.1	7.2	15.1	0.2	0.2	0.0	0.0	0.0	77.3	7.2	15.5	0.114	0.523	25.690679	-100.557966
Morones Prieto	96.10																			

24 CARR: Torreón - Saltillo (Cuota)

CLAVE:

RUTA: MEX-040D

AÑO: 2012

LUGAR	ESTACION				CLASIFICACION VEHICULAR EN PORCIENTO														COORDENADAS	
	KM	TE	SC	TDPA	M	A	B	C2	C3	T3S2	T3S3	T3S2R4	OTROS	A	B	C	K'	D	LATITUD	LONGITUD
Matamoros	0.00																			
Caseta de Cobro La Cuchilla	37.00	2	1	1947	0.2	49.2	8.0	2.5	1.1	22.1	4.7	10.4	1.8	49.4	8.0	42.6	0.091	0.500	25.626987	-102.878211
Caseta de Cobro La Cuchilla	37.00	2	2	1947	0.2	49.2	8.0	2.5	1.1	22.1	4.7	10.4	1.8	49.4	8.0	42.6	0.091	0.500	25.626987	-102.878211
Caseta de Cobro Plan de Ayala	205.00	2	1	1985	0.2	53.1	8.4	2.2	1.1	19.3	3.7	10.1	1.9	53.3	8.4	38.3	0.091	0.500	25.444124	-101.303943
Caseta de Cobro Plan de Ayala	205.00	2	2	1985	0.2	53.1	8.4	2.2	1.1	19.3	3.7	10.1	1.9	53.3	8.4	38.3	0.091	0.500	25.444124	-101.303943
T. C. Saltillo - Torreón (Libre)	206.80																			

25 CARR: Allende - Villa Unión

CLAVE: 05001

RUTA: COA-015

AÑO: 2012

LUGAR	ESTACION				CLASIFICACION VEHICULAR EN PORCIENTO														COORDENADAS	
	KM	TE	SC	TDPA	M	A	B	C2	C3	T3S2	T3S3	T3S2R4	OTROS	A	B	C	K'	D	LATITUD	LONGITUD
Allende	0.00	3	0	2139	1.0	71.5	1.5	23.5	1.0	1.3	0.1	0.0	0.1	72.5	1.5	26.0	0.100	0.502	28.335616	-100.838214
Villa Unión	19.00																			

COAHUILA

26 CARR: Cuatro Ciénegas - Ocampo

CLAVE: 05026

RUTA: COA-048

AÑO: 2012

LUGAR	ESTACION				CLASIFICACION VEHICULAR EN PORCIENTO														COORDENADAS	
	KM	TE	SC	TDPA	M	A	B	C2	C3	T3S2	T3S3	T3S2R4	OTROS	A	B	C	K'	D	LATITUD	LONGITUD
Cuatro Ciénegas	0.00	3	0	1274	1.2	90.1	2.3	3.5	1.0	1.6	0.2	0.0	0.1	91.3	2.3	6.4	0.092	0.501	27.002084	-102.073565
Ocampo	50.00																			

27 CARR: El Sauz - Palau

CLAVE: 05060

RUTA: COA-022

AÑO: 2012

LUGAR	ESTACION				CLASIFICACION VEHICULAR EN PORCIENTO														COORDENADAS	
	KM	TE	SC	TDPA	M	A	B	C2	C3	T3S2	T3S3	T3S2R4	OTROS	A	B	C	K'	D	LATITUD	LONGITUD
El Sauz	0.00	3	1	1527	0.2	71.9	1.4	14.1	1.5	3.4	4.2	2.3	1.0	72.1	1.4	26.5	0.105	0.524	27.640569	-101.189314
El Sauz	0.00	3	2	1524	0.3	69.4	1.5	14.6	1.8	3.9	4.6	2.8	1.1	69.7	1.5	28.8	0.102	0.524	27.640430	-101.189274
Minas de Barroterán	31.00	3	1	1265	1.2	61.0	4.7	19.8	2.9	4.5	3.3	1.7	0.9	62.2	4.7	33.1	0.105	0.502	27.662724	-101.288966
Minas de Barroterán	31.00	3	2	1277	0.8	58.0	5.3	21.8	3.2	4.6	3.6	1.8	0.9	58.8	5.3	35.9	0.095	0.502	27.662289	-101.289065
Palau	42.50	1	1	2113	2.0	72.8	0.6	14.8	2.1	4.1	2.3	0.6	0.7	74.8	0.6	24.6	0.105	0.501	27.882302	-101.416647
Palau	42.50	1	2	2106	0.8	71.8	0.6	15.8	2.3	4.6	2.4	0.7	1.0	72.6	0.6	26.8	0.116	0.501	27.882302	-101.416647

28 CARR: Emiliano Zapata - Viesca

CLAVE: 05521

RUTA: COA-082

AÑO: 2012

LUGAR	ESTACION				CLASIFICACION VEHICULAR EN PORCIENTO														COORDENADAS	
	KM	TE	SC	TDPA	M	A	B	C2	C3	T3S2	T3S3	T3S2R4	OTROS	A	B	C	K'	D	LATITUD	LONGITUD
Emiliano Zapata	0.00	3	0	675	0.8	77.4	1.9	17.1	1.4	1.2	0.1	0.0	0.1	78.2	1.9	19.9	0.110	0.504	25.486118	-102.943349
Viesca	24.00																			

29 CARR: Ent. La Rosa - General Cepeda

CLAVE: 05034

RUTA: COA-034

AÑO: 2012

LUGAR	ESTACION				CLASIFICACION VEHICULAR EN PORCIENTO														COORDENADAS	
	KM	TE	SC	TDPA	M	A	B	C2	C3	T3S2	T3S3	T3S2R4	OTROS	A	B	C	K'	D	LATITUD	LONGITUD
T. C. Saltillo - Torreón	0.00	3	0	1092	0.2	74.9	7.2	14.8	0.9	1.7	0.1	0.2	0.0	75.1	7.2	17.7	0.146	0.503	25.506890	-101.379270
Gral. Cepeda	21.00	1	0	1185	0.5	69.9	9.5	18.0	0.7	1.3	0.0	0.0	0.1	70.4	9.5	20.1	0.115	0.501	25.390415	-101.478048

30 CARR: Ent. Paila - Parras de La Fuente

CLAVE: 05014

RUTA: COA-102

AÑO: 2012

LUGAR	ESTACION				CLASIFICACION VEHICULAR EN PORCIENTO														COORDENADAS	
	KM	TE	SC	TDPA	M	A	B	C2	C3	T3S2	T3S3	T3S2R4	OTROS	A	B	C	K'	D	LATITUD	LONGITUD
Ent. Paila	0.00	3	0	1874	0.4	74.4	5.0	14.0	1.2	3.0	0.8	0.6	0.6	74.8	5.0	20.2	0.104	0.542	25.645438	-102.147274
Parras de La Fuente	20.05	1	1	1678	5.2	79.8	3.3	8.7	0.6	1.3	0.5	0.2	0.4	85.0	3.3	11.7	0.131	0.501	25.467958	-102.173832
Parras de La Fuente	20.05	1	2	1681	8.3	74.8	3.6	10.4	0.5	1.3	0.5	0.2	0.4	83.1	3.6	13.3	0.131	0.501	25.467958	-102.173832

COAHUILA

31 CARR : Libramiento de Matamoros

CLAVE: 05032

RUTA: COA

AÑO : 2012

LUGAR	ESTACION				CLASIFICACION VEHICULAR EN PORCIENTO												COORDENADAS			
	KM	TE	SC	TDPA	M	A	B	C2	C3	T3S2	T3S3	T3S2R4	OTROS	A	B	C	K'	D	LATITUD	LONGITUD
T. C. Saltillo - Torreón	0.00	3	0	7429	2.1	64.4	2.4	15.2	2.3	7.7	3.4	1.6	0.9	66.5	2.4	31.1	0.082	0.503	25.530976	-103.218718
X. C. Matamoros - La Unión	3.70	3	1	6298	3.8	69.8	2.4	6.9	2.5	8.6	2.8	2.6	0.6	73.6	2.4	24.0	0.071	0.504	25.538265	-103.225697
X. C. Matamoros - La Unión	3.70	3	2	6198	1.5	68.4	2.7	7.6	2.8	10.2	3.3	2.9	0.6	69.9	2.7	27.4	0.083	0.504	25.538265	-103.225697
T. C. Saltillo - Torreón	5.32	1	1	7322	1.4	69.1	4.2	6.3	2.3	9.8	3.1	3.1	0.7	70.5	4.2	25.3	0.079	0.505	25.536827	-103.245091
T. C. Saltillo - Torreón	5.32	1	2	7189	1.6	66.8	4.6	6.9	2.6	9.9	3.4	3.5	0.7	68.4	4.6	27.0	0.083	0.505	25.536827	-103.245091

32 CARR : Libramiento de Saltillo J.L.P.

CLAVE: 05031

RUTA: COA

AÑO : 2012

LUGAR	ESTACION				CLASIFICACION VEHICULAR EN PORCIENTO												COORDENADAS			
	KM	TE	SC	TDPA	M	A	B	C2	C3	T3S2	T3S3	T3S2R4	OTROS	A	B	C	K'	D	LATITUD	LONGITUD
T. C. Ent. Bella Unión - Saltillo	0.00																			
X. C. Saltillo - Arteaga	2.50	3	1	7145	0.7	74.1	4.1	4.1	5.4	7.1	2.5	1.1	0.9	74.8	4.1	21.1	0.126	0.519	25.448522	-100.892091
X. C. Saltillo - Arteaga	2.50	3	2	6951	1.1	71.8	4.5	4.7	5.5	7.4	2.8	1.3	0.9	72.9	4.5	22.6	0.090	0.519	25.448416	-100.892198
T. C. Saltillo - Monterrey	18.00	1	1	6569	1.0	64.6	4.0	9.7	5.3	12.0	1.7	1.0	0.7	65.6	4.0	30.4	0.105	0.510	25.554644	-100.921858
T. C. Saltillo - Monterrey	18.00	1	2	6220	1.6	60.5	4.3	11.2	5.8	12.8	2.0	1.1	0.7	62.1	4.3	33.6	0.132	0.510	25.554644	-100.921858

33 CARR : Libramiento de Torreón

CLAVE: 05516

RUTA: COA

AÑO : 2012

LUGAR	ESTACION				CLASIFICACION VEHICULAR EN PORCIENTO												COORDENADAS			
	KM	TE	SC	TDPA	M	A	B	C2	C3	T3S2	T3S3	T3S2R4	OTROS	A	B	C	K'	D	LATITUD	LONGITUD
X. C. Saltillo - Torreón	0.00	3	1	22669	1.1	83.4	2.3	3.2	0.9	3.5	4.0	1.0	0.6	84.5	2.3	13.2	0.080	0.519	25.540674	-103.370436
X. C. Saltillo - Torreón	0.00	3	2	23198	0.7	82.7	2.4	3.5	1.0	3.8	4.1	1.2	0.6	83.4	2.4	14.2	0.074	0.519	25.540674	-103.370436
T. C. La Cuchilla - Torreón (Baja)	7.30	1	1	10362	1.1	86.8	1.9	2.9	0.7	2.5	2.9	0.6	0.6	87.9	1.9	10.2	0.077	0.513	25.582543	-103.402867
T. C. La Cuchilla - Torreón (Alta)	7.30	1	1	6001	1.0	79.6	3.2	4.1	2.1	5.8	2.2	1.4	0.6	80.6	3.2	16.2	0.079	0.505	25.582561	-103.402859
T. C. La Cuchilla - Torreón (Alta)	7.30	1	2	5877	0.9	77.0	3.6	4.9	2.2	6.7	2.5	1.6	0.6	77.9	3.6	18.5	0.087	0.505	25.582575	-103.402850
T. C. La Cuchilla - Torreón (Baja)	7.30	1	2	9848	1.0	85.6	2.0	3.4	0.8	2.8	3.2	0.6	0.6	86.6	2.0	11.4	0.079	0.513	25.582552	-103.402850
Lim. Edos. Term. Coah. Ppia. Dgo.	11.80																			
T. C. Durango - Torreón	28.60																			

34 CARR : Monclova - Estación Candela

CLAVE: 00501

RUTA: COA-030-NL

AÑO : 2012

LUGAR	ESTACION				CLASIFICACION VEHICULAR EN PORCIENTO												COORDENADAS			
	KM	TE	SC	TDPA	M	A	B	C2	C3	T3S2	T3S3	T3S2R4	OTROS	A	B	C	K'	D	LATITUD	LONGITUD
T. C. Monclova - Piedras Negras	0.00																			
T. Izq. Libramiento de Monclova	5.10	1	1	1411	2.3	89.0	1.3	3.7	1.2	1.9	0.3	0.0	0.3	91.3	1.3	7.4	0.112	0.507	26.936813	-101.381600

COAHUILA

39 CARR: Sabinas - Don Martín

CLAVE: 05501

RUTA: COA-025

AÑO: 2012

LUGAR	ESTACION				CLASIFICACION VEHICULAR EN PORCIENTO													COORDENADAS		
	KM	TE	SC	TDPA	M	A	B	C2	C3	T3S2	T3S3	T3S2R4	OTROS	A	B	C	K'	D	LATITUD	LONGITUD
Sabinas	0.00	3	0	1988	2.8	69.4	7.3	15.6	1.6	1.5	0.3	0.6	0.9	72.2	7.3	20.5	0.101	0.573	27.849872	-101.097022
Juárez	53.00	3	0	407	7.2	80.2	1.9	3.5	2.7	3.6	0.9	0.0	0.0	87.4	1.9	10.7	0.126	0.531	27.619667	-100.704891
Don Martín	66.00	1	0	404	6.7	80.6	1.7	3.9	2.4	3.8	0.9	0.0	0.0	87.3	1.7	11.0	0.118	0.527	27.534172	-100.623364

40 CARR: Saltillo - Arteaga

CLAVE: 05008

RUTA: COA-106

AÑO: 2012

LUGAR	ESTACION				CLASIFICACION VEHICULAR EN PORCIENTO													COORDENADAS		
	KM	TE	SC	TDPA	M	A	B	C2	C3	T3S2	T3S3	T3S2R4	OTROS	A	B	C	K'	D	LATITUD	LONGITUD
Saltillo	0.00	3	1	6154	1.5	86.5	4.7	5.4	0.7	0.8	0.3	0.0	0.1	88.0	4.7	7.3	0.083	0.508	25.443580	-100.943772
Saltillo	0.00	3	2	6264	1.7	84.8	5.6	5.9	0.7	0.9	0.3	0.0	0.1	86.5	5.6	7.9	0.093	0.508	25.443765	-100.943760
X. C. Libramiento de Matehuala - Monterrey	9.00	1	1	5573	1.8	81.9	5.6	6.2	1.1	1.2	1.2	0.2	0.8	83.7	5.6	10.7	0.093	0.519	25.444547	-100.897803
X. C. Libramiento de Matehuala - Monterrey	9.00	1	2	4704	2.0	83.2	4.9	5.8	1.1	1.1	1.0	0.2	0.7	85.2	4.9	9.9	0.098	0.519	25.444464	-100.897828
X. C. Libramiento de Matehuala - Monterrey	9.00	3	1	2902	2.0	84.1	4.6	5.6	1.6	0.9	0.5	0.2	0.5	86.1	4.6	9.3	0.112	0.506	25.448938	-100.885954
X. C. Libramiento de Matehuala - Monterrey	9.00	3	2	2970	1.9	82.4	5.4	6.4	1.6	1.0	0.5	0.2	0.6	84.3	5.4	10.3	0.101	0.506	25.449043	-100.886077
Arteaga	12.00	1	1	2091	2.5	83.9	4.7	5.6	1.2	1.0	0.5	0.1	0.5	86.4	4.7	8.9	0.124	0.501	25.448703	-100.869659
Arteaga	12.00	1	2	2099	2.3	82.4	5.4	6.1	1.5	1.2	0.4	0.1	0.6	84.7	5.4	9.9	0.115	0.501	25.448878	-100.869788
T. C. Ent. Bella Unión - Saltillo	18.00																			

41 CARR: San Buenaventura - Estación Hermanas

CLAVE: 05004

RUTA: COA-034

AÑO: 2012

LUGAR	ESTACION				CLASIFICACION VEHICULAR EN PORCIENTO													COORDENADAS		
	KM	TE	SC	TDPA	M	A	B	C2	C3	T3S2	T3S3	T3S2R4	OTROS	A	B	C	K'	D	LATITUD	LONGITUD
San Buenaventura	0.00	3	0	1453	1.0	79.9	1.2	14.6	1.4	1.3	0.5	0.0	0.1	80.9	1.2	17.9	0.119	0.507	27.089046	-101.514413
Estación Hermanas	50.00	1	0	1378	0.6	87.8	2.0	4.2	1.4	2.4	1.0	0.4	0.2	88.4	2.0	9.6	0.133	0.507	27.222781	-101.230126

42 CARR: T. C. (Ent. Morelos - Saltillo) - Parras de La Fuente

CLAVE: 05510

RUTA: COA-105

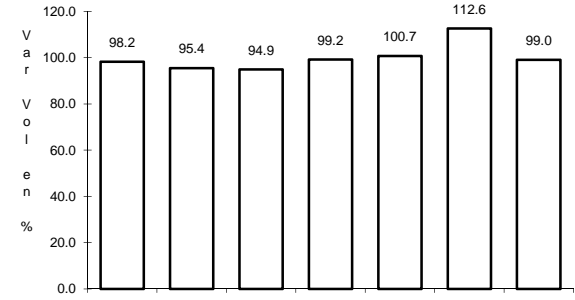
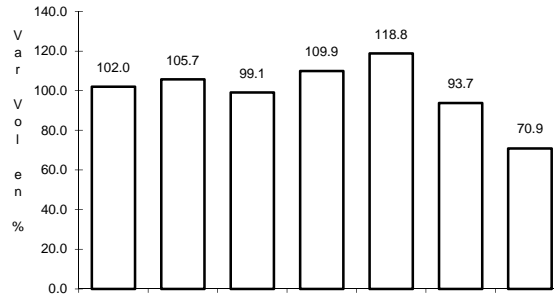
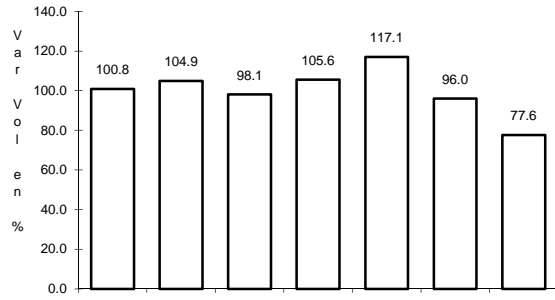
AÑO: 2012

LUGAR	ESTACION				CLASIFICACION VEHICULAR EN PORCIENTO													COORDENADAS		
	KM	TE	SC	TDPA	M	A	B	C2	C3	T3S2	T3S3	T3S2R4	OTROS	A	B	C	K'	D	LATITUD	LONGITUD
T. C. Morelos - Saltillo	0.00	3	1	2334	2.4	70.4	5.7	5.1	3.6	10.7	1.2	0.2	0.7	72.8	5.7	21.5	0.133	0.507	25.261144	-101.101673
T. C. Morelos - Saltillo	0.00	3	2	2398	1.1	68.0	6.3	5.4	4.1	12.6	1.4	0.2	0.9	69.1	6.3	24.6	0.146	0.507	25.260999	-101.101519
Gral. Cepeda	40.00	1	0	892	0.9	60.1	8.4	29.5	0.3	0.7	0.1	0.0	0.0	61.0	8.4	30.6	0.120	0.502	25.361749	-101.473715
Gral. Cepeda	40.00	3	0	642	1.5	72.3	5.9	18.8	0.3	1.0	0.1	0.0	0.1	73.8	5.9	20.3	0.119	0.508	25.378674	-101.484953
Parras de La Fuente	102.00	1	0	1809	10.5	77.6	2.3	6.7	0.2	2.3	0.2	0.0	0.2	88.1	2.3	9.6	0.098	0.501	25.443564	-102.157263

1 CARR: Cd. Acuña - Presa de La Amistad

CLAVE: 05085

RUTA: MEX-002



Km: 0.00 Tipo: 3 Sent: 1

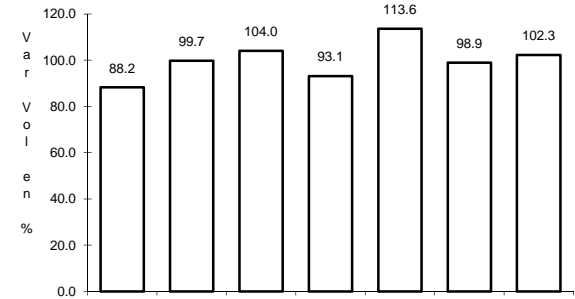
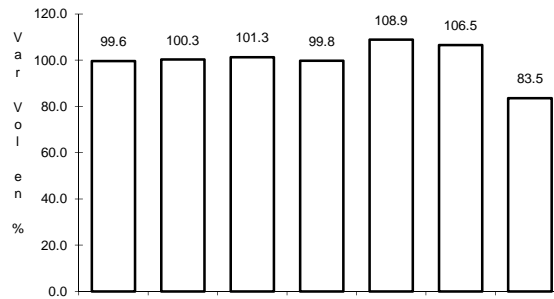
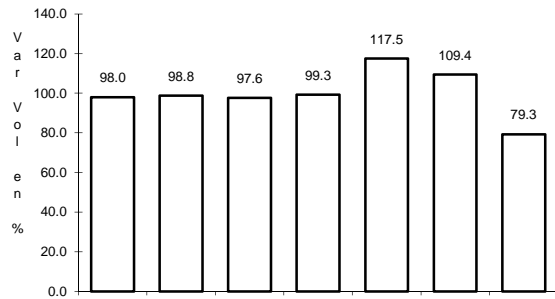
Km: 0.00 Tipo: 3 Sent: 2

Km: 23.00 Tipo: 1 Sent: 0

2 CARR: Durango - Torreón

CLAVE: 10085

RUTA: MEX-040



Km: 0.00 Tipo: 3 Sent: 1

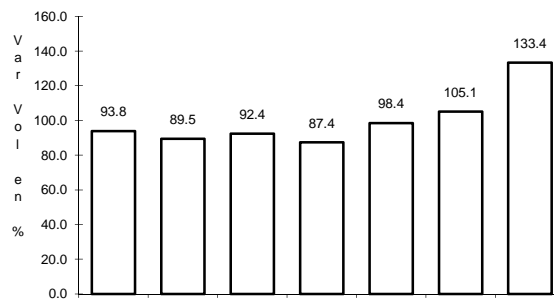
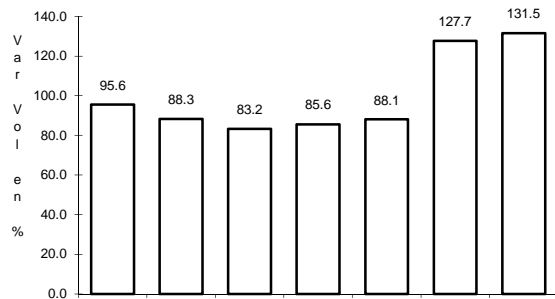
Km: 0.00 Tipo: 3 Sent: 2

Km: 120.90 Tipo: 1 Sent: 0

3 CARR: Ent. Bella Unión - Saltillo

CLAVE: 05003

RUTA: MEX-057



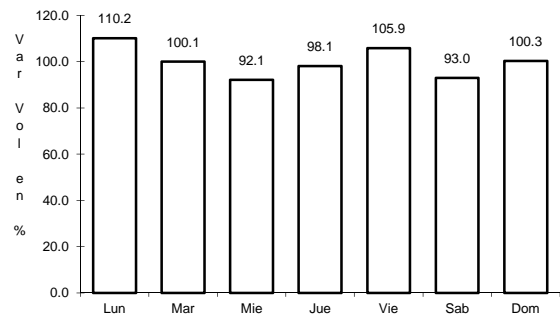
Km: 4.61 Tipo: 1 Sent: 1

Km: 4.61 Tipo: 1 Sent: 2

4 CARR: Ent. La Cuchilla - Torreón

CLAVE: 05021

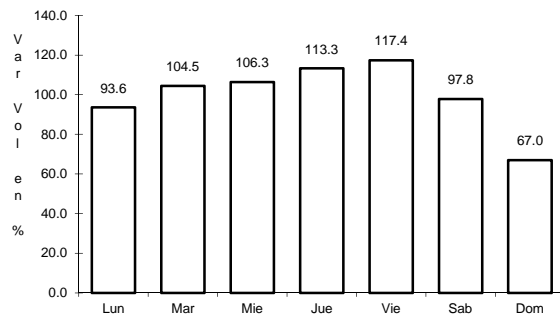
RUTA: MEX-040



Km: 0.00

Tipo: 3

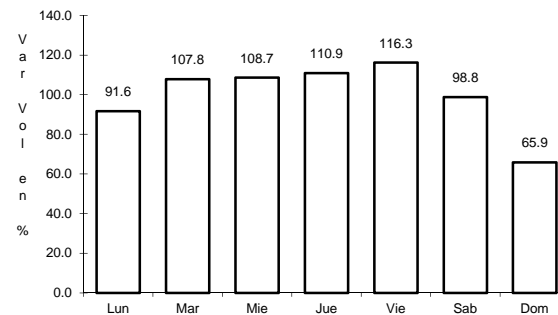
Sent: 0



Km: 84.00

Tipo: 1

Sent: 1



Km: 84.00

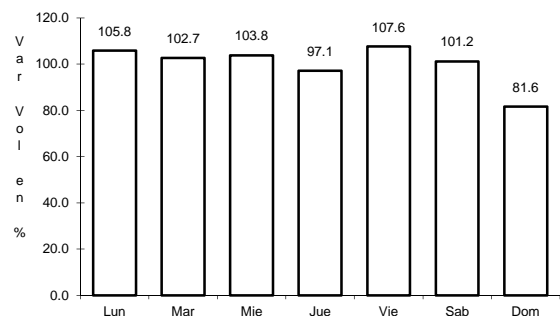
Tipo: 1

Sent: 2

5 CARR: Ent. Morelos - Saltillo

CLAVE: 00149

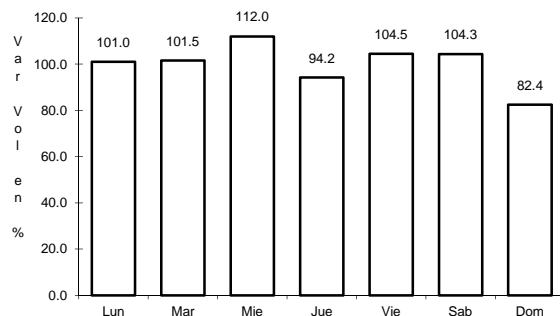
RUTA: MEX-054



Km: 0.00

Tipo: 3

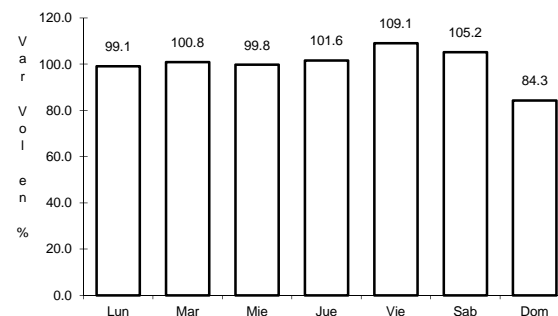
Sent: 1



Km: 0.00

Tipo: 3

Sent: 2



Km: 333.00

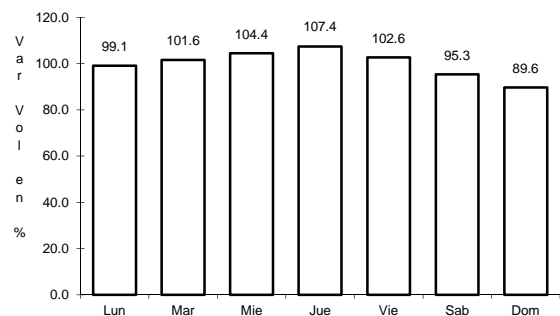
Tipo: 3

Sent: 0

6 CARR: Gregorio García - Francisco I. Madero

CLAVE: 00110

RUTA: MEX-040



Km: 9.60

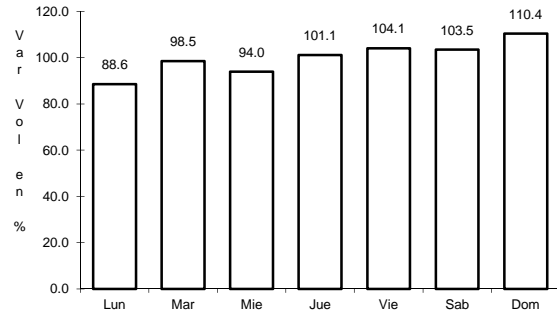
Tipo: 1

Sent: 0

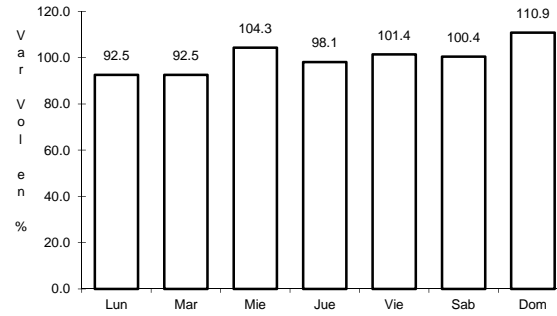
7 CARR: Huachichil - La Encantada

CLAVE: 05002

RUTA: MEX-057



Km: 0.00 Tipo: 3 Sent: 0

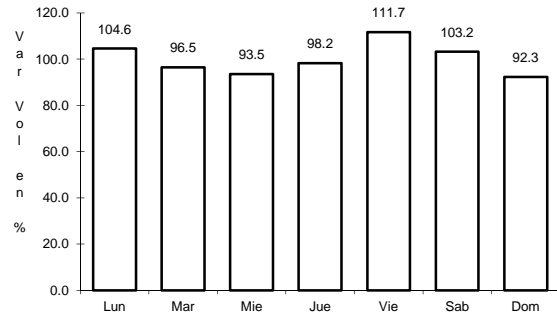


Km: 41.00 Tipo: 1 Sent: 0

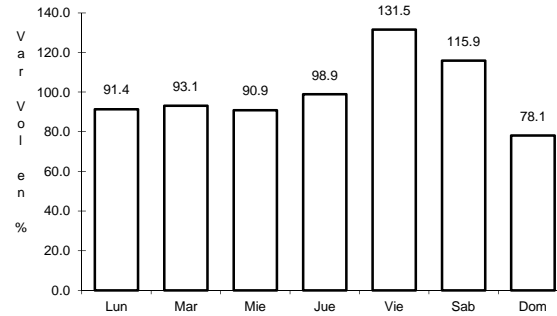
8 CARR: Libramiento Allende - Nava

CLAVE: 05518

RUTA: MEX-057



Km: 0.00 Tipo: 3 Sent: 1

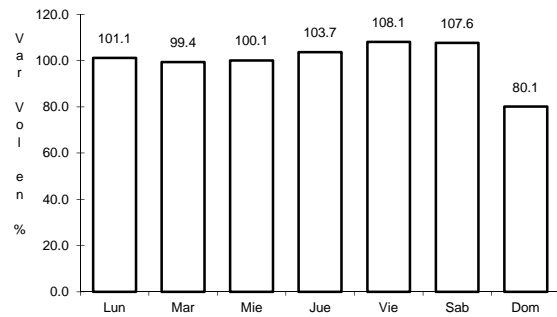


Km: 0.00 Tipo: 3 Sent: 2

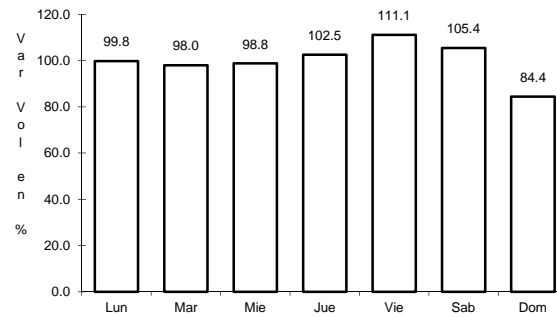
9 CARR: Monclova - Piedras Negras

CLAVE: 05407

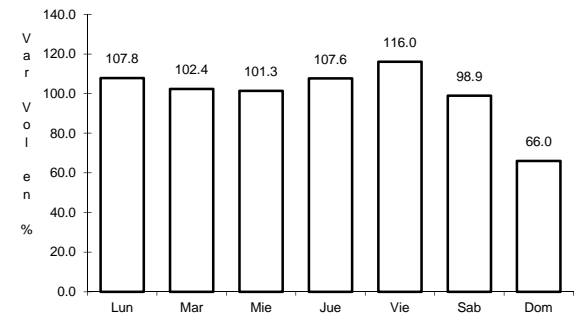
RUTA: MEX-057



Km: 0.00 Tipo: 3 Sent: 1



Km: 0.00 Tipo: 3 Sent: 2

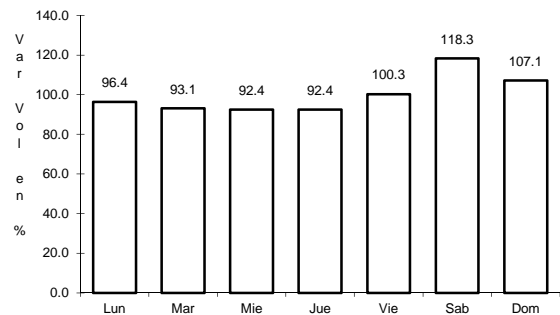


Km: 126.30 Tipo: 3 Sent: 0

10 CARR: Monclova - San Pedro de Las Colonias

CLAVE: 05062

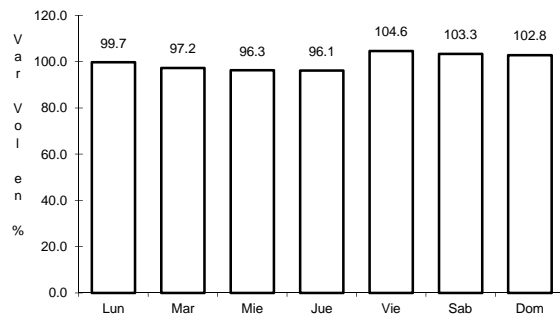
RUTA: MEX-030



Km: 2.00

Tipo: 3

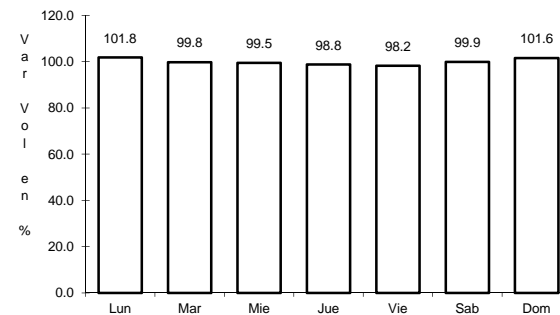
Sent: 1



Km: 2.00

Tipo: 3

Sent: 2



Km: 80.15

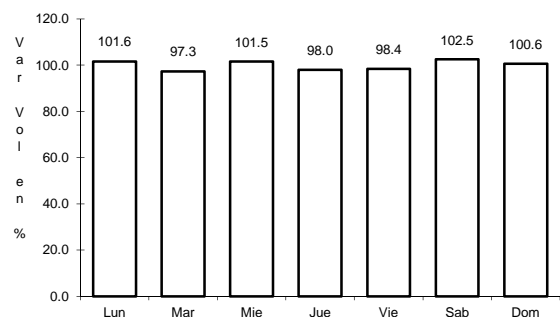
Tipo: 3

Sent: 0

11 CARR: Monterrey - Castaños

CLAVE: 00128

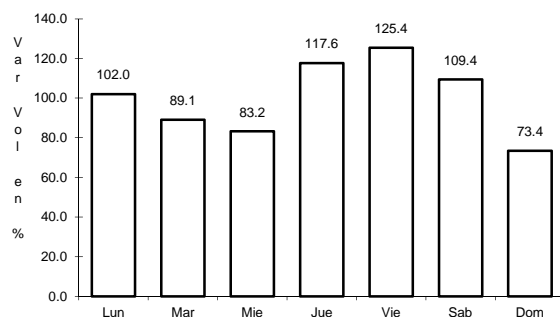
RUTA: MEX-053



Km: 0.00

Tipo: 3

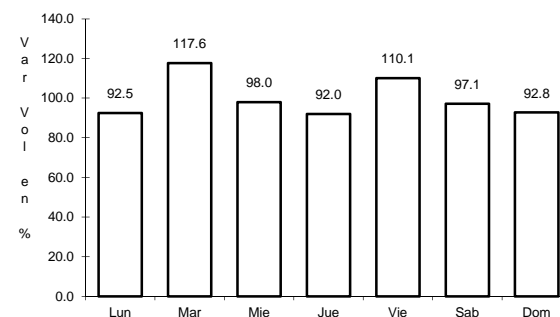
Sent: 0



Km: 155.90

Tipo: 1

Sent: 1



Km: 155.90

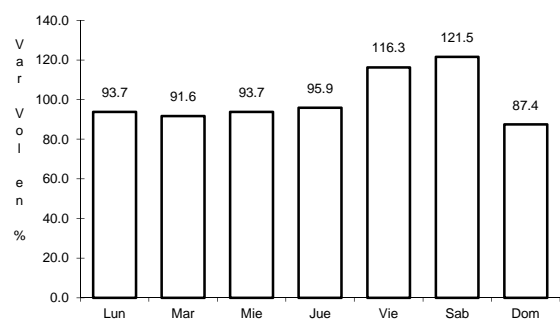
Tipo: 1

Sent: 2

12 CARR: Morelos - Cd. Acuña

CLAVE: 05029

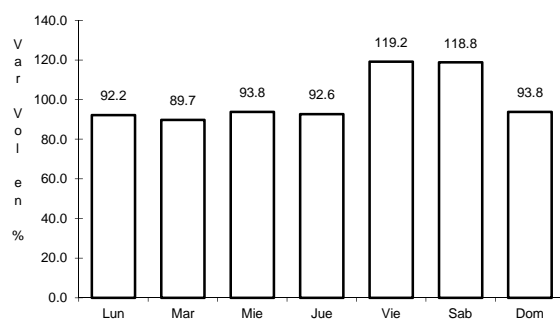
RUTA: MEX-029



Km: 0.00

Tipo: 3

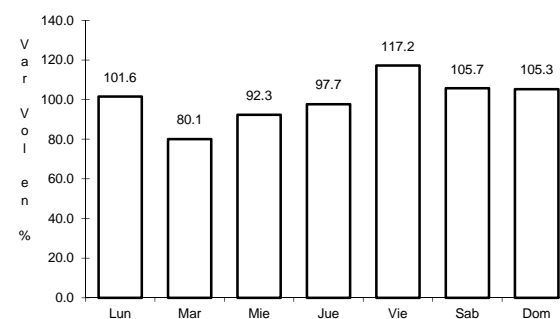
Sent: 1



Km: 0.00

Tipo: 3

Sent: 2



Km: 69.00

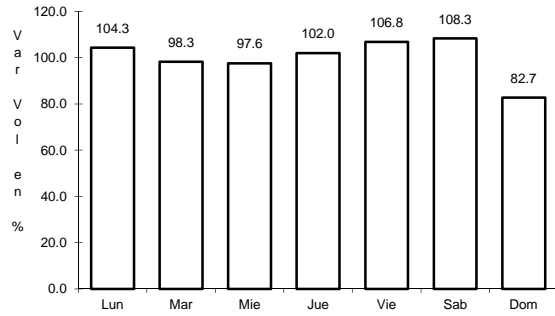
Tipo: 1

Sent: 0

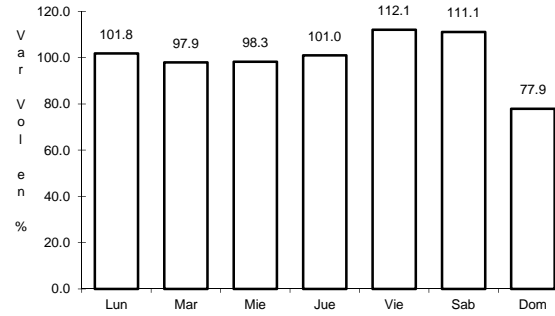
13 CARR: Nueva Rosita - Boquillas del Carmen

CLAVE: 05028

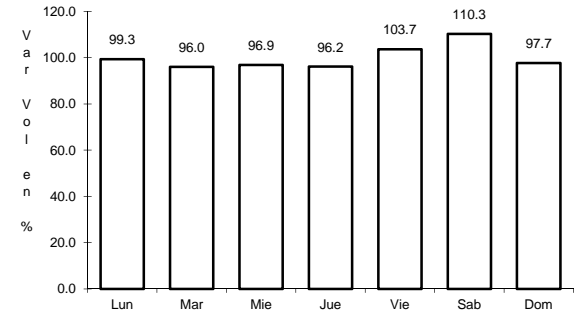
RUTA: MEX-053



Km: 0.00 Tipo: 3 Sent: 1



Km: 0.00 Tipo: 3 Sent: 2

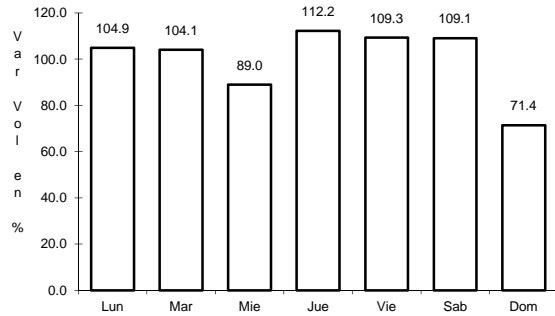


Km: 35.00 Tipo: 3 Sent: 0

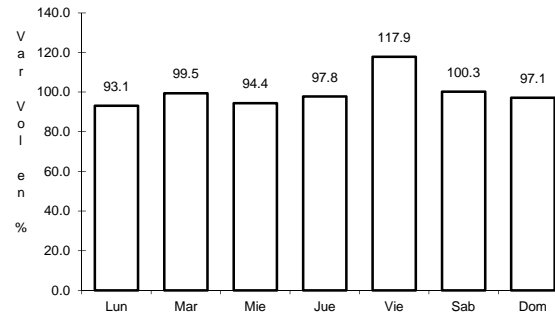
14 CARR: Ojo Caliente - Santa Cruz

CLAVE: 05007

RUTA: MEX-057



Km: 0.00 Tipo: 3 Sent: 0

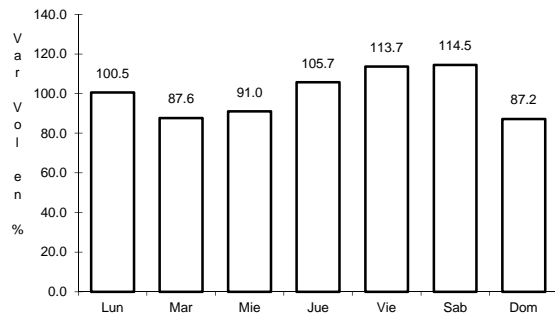


Km: 34.00 Tipo: 1 Sent: 0

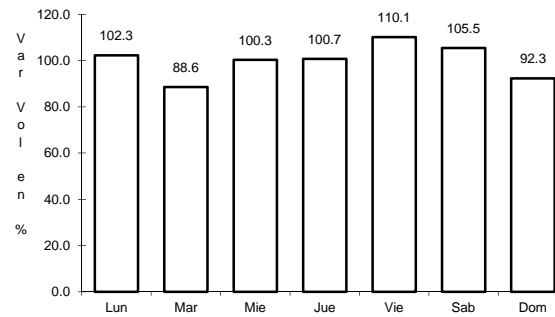
15 CARR: Piedras Negras - Cd. Acuña

CLAVE: 05061

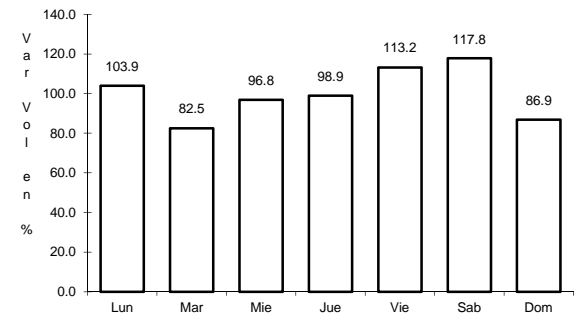
RUTA: MEX-002



Km: 0.00 Tipo: 3 Sent: 1



Km: 0.00 Tipo: 3 Sent: 2

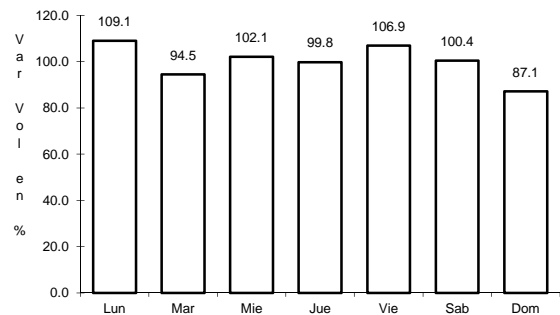


Km: 83.30 Tipo: 1 Sent: 0

16 CARR: Piedras Negras - Nuevo Laredo

CLAVE: 00503

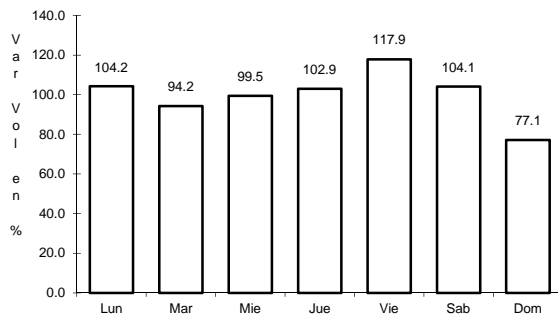
RUTA: MEX-002



Km: 0.00

Tipo: 3

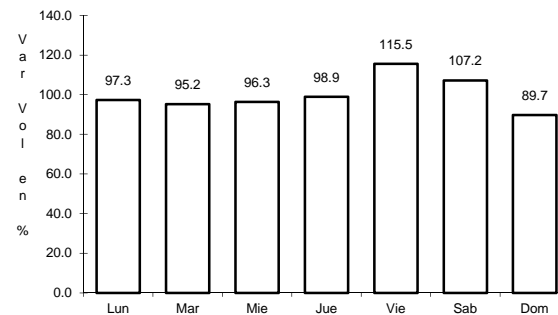
Sent: 1



Km: 0.00

Tipo: 3

Sent: 2



Km: 134.00

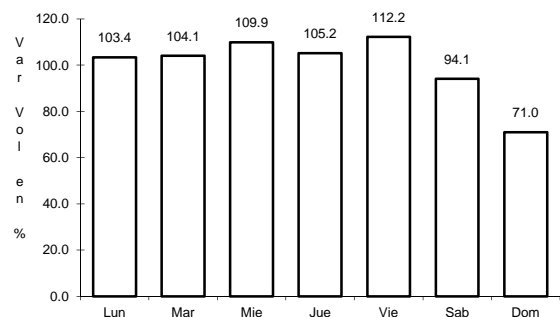
Tipo: 3

Sent: 0

17 CARR: Saltillo - Monclova

CLAVE: 05406

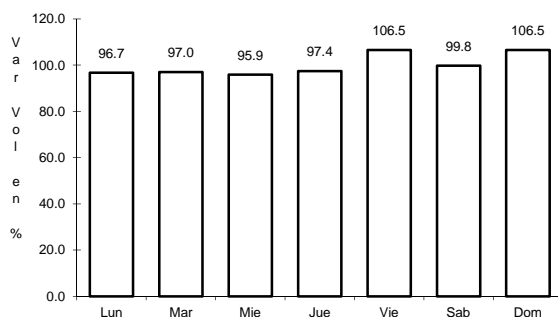
RUTA: MEX-057



Km: 13.00

Tipo: 1

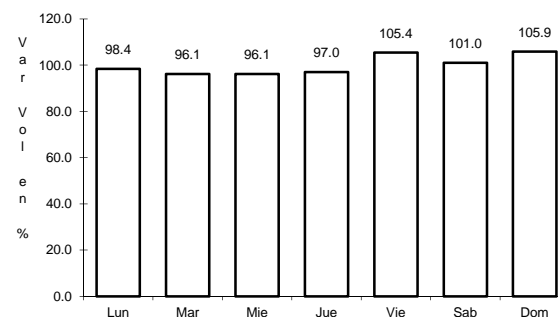
Sent: 0



Km: 192.00

Tipo: 1

Sent: 1



Km: 192.00

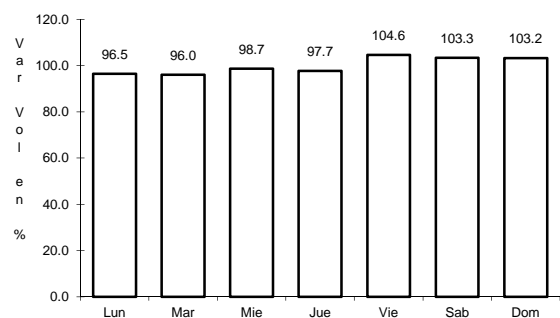
Tipo: 1

Sent: 2

18 CARR: Saltillo - Monterrey

CLAVE: 00087

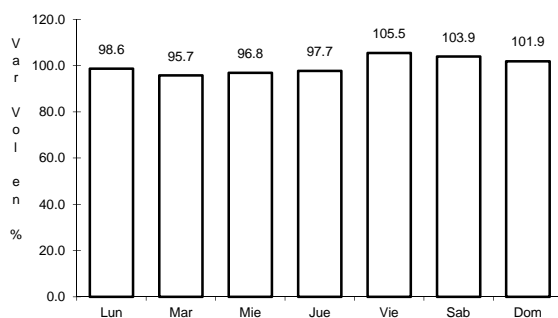
RUTA: MEX-040



Km: 4.25

Tipo: 3

Sent: 1



Km: 4.25

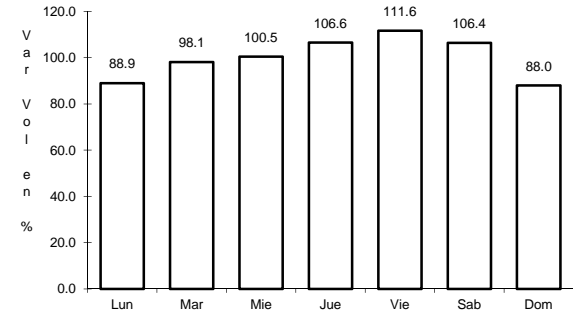
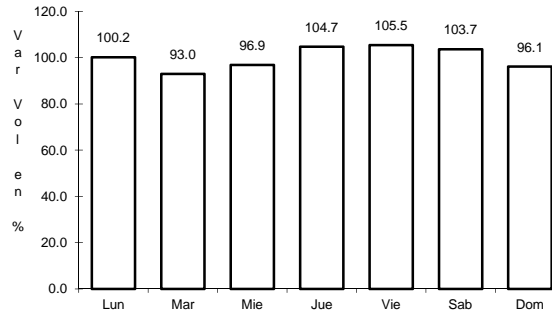
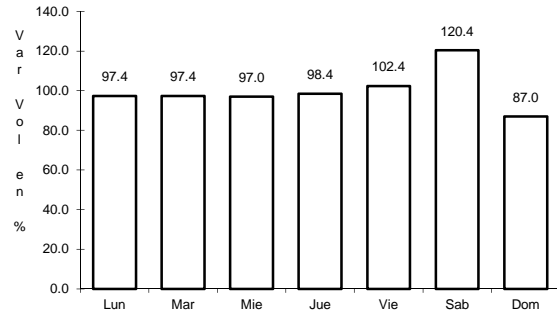
Tipo: 3

Sent: 2

19 CARR: Saltillo - Torreón

CLAVE: 05086

RUTA: MEX-040



Km: 6.10 Tipo: 3 Sent: 1

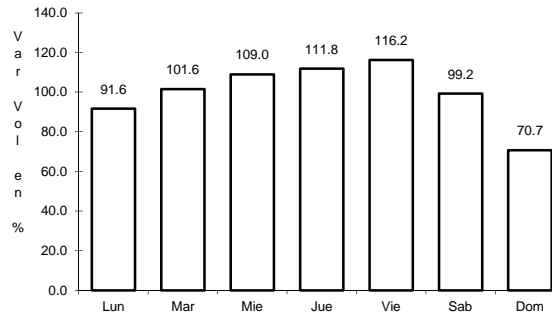
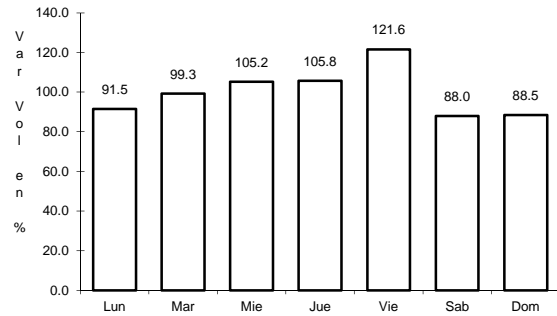
Km: 6.10 Tipo: 3 Sent: 2

Km: 91.20 Tipo: 1 Sent: 0

20 CARR: Libramiento Norponiente de Saltillo (Cuota)

CLAVE: 05022

RUTA: MEX-040D



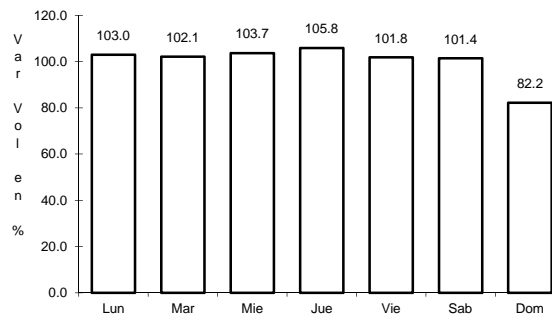
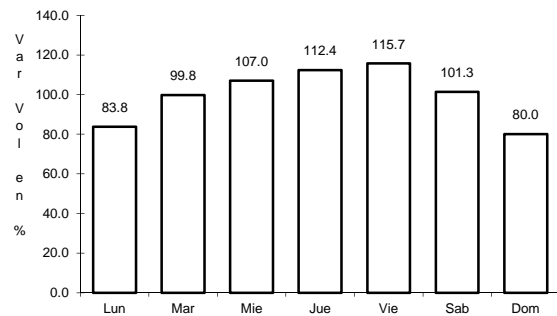
Km: 0.00 Tipo: 3 Sent: 0

Km: 46.21 Tipo: 1 Sent: 0

21 CARR: Libramiento Oriente de Saltillo (Cuota)

CLAVE: 00115

RUTA: MEX-057D



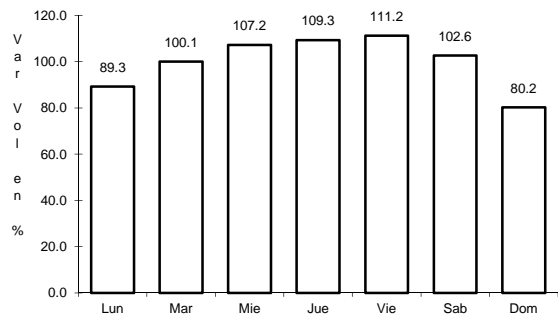
Km: 12.30 Tipo: 3 Sent: 1

Km: 12.30 Tipo: 3 Sent: 2

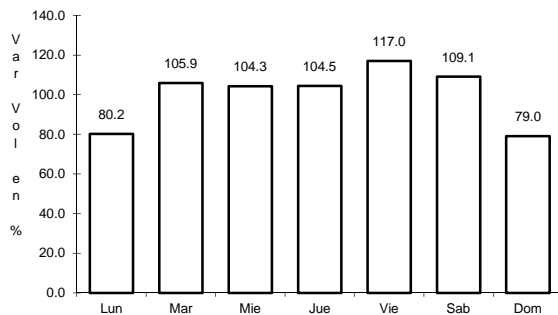
22 CARR: Puerto México - La Carbonera (Cuota)

CLAVE: 00115

RUTA: MEX-057D



Km: 224.94 Tipo: 1 Sent: 1

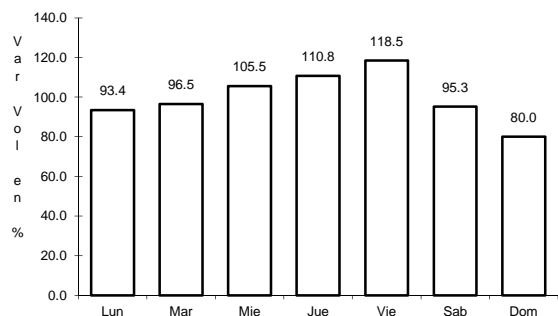


Km: 224.94 Tipo: 1 Sent: 2

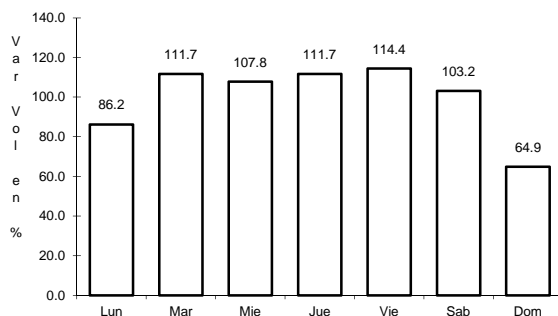
23 CARR: Saltillo - Monterrey (Cuota)

CLAVE: 00087

RUTA: MEX-040D



Km: 46.21 Tipo: 3 Sent: 1

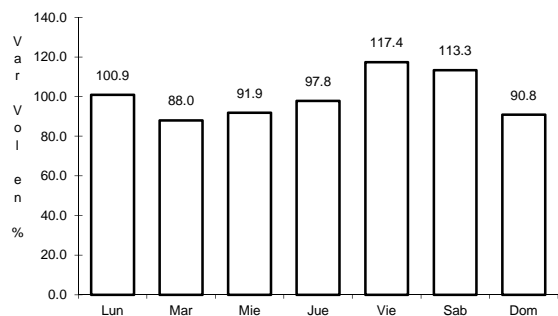


Km: 46.21 Tipo: 3 Sent: 2

25 CARR: Allende - Villa Unión

CLAVE: 05001

RUTA: COA-015

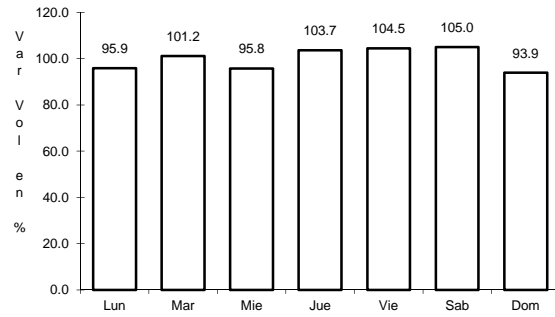


Km: 0.00 Tipo: 3 Sent: 0

26 CARR: Cuatro Ciénegas - Ocampo

CLAVE: 05026

RUTA: COA-048



Km: 0.00

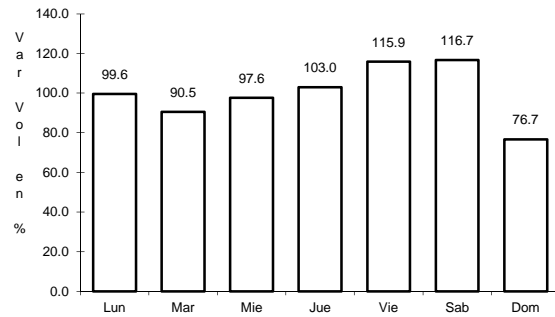
Tipo: 3

Sent: 0

27 CARR: El Sauz - Palau

CLAVE: 05060

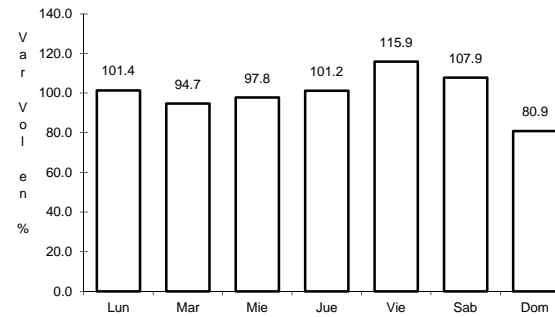
RUTA: COA-022



Km: 0.00

Tipo: 3

Sent: 1



Km: 0.00

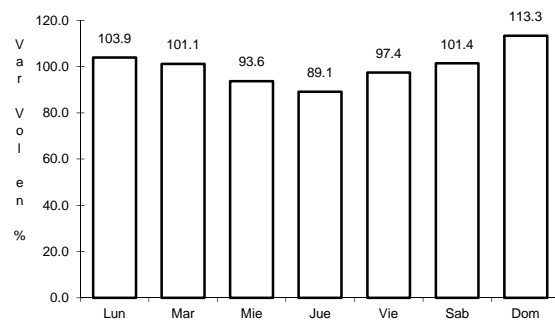
Tipo: 3

Sent: 2

28 CARR: Emiliano Zapata - Viesca

CLAVE: 05521

RUTA: COA-082



Km: 0.00

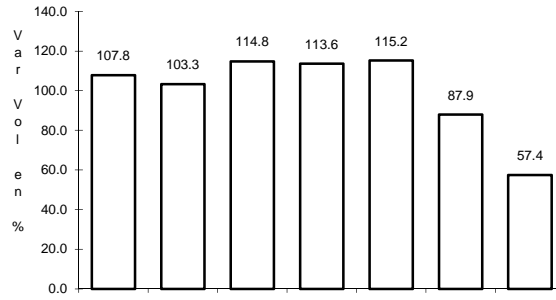
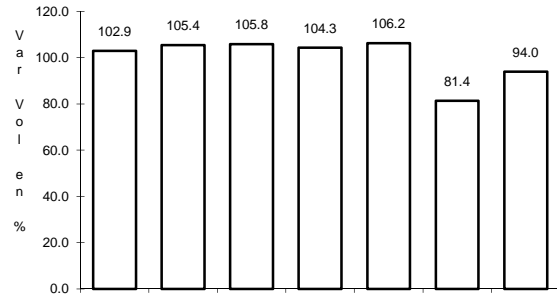
Tipo: 3

Sent: 0

32 CARR: Libramiento de Saltillo J.L.P.

CLAVE: 05031

RUTA: COA



Km: 2.50

Tipo: 3

Sent: 1

Km: 2.50

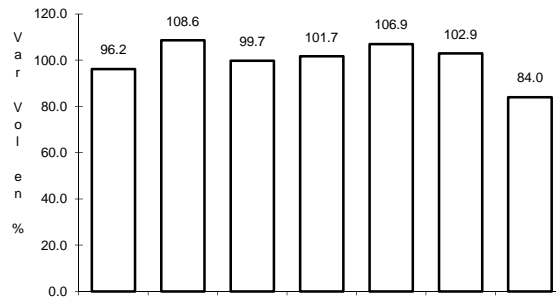
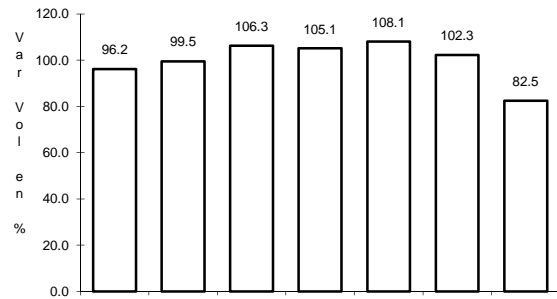
Tipo: 3

Sent: 2

33 CARR: Libramiento de Torreón

CLAVE: 05516

RUTA: COA



Km: 0.00

Tipo: 3

Sent: 1

Km: 0.00

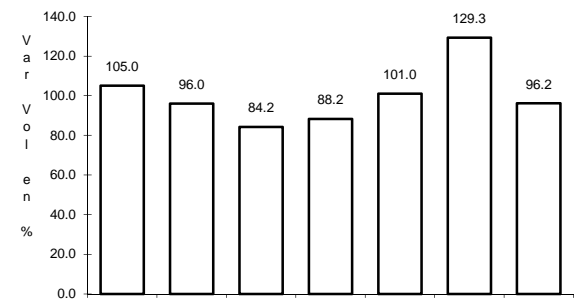
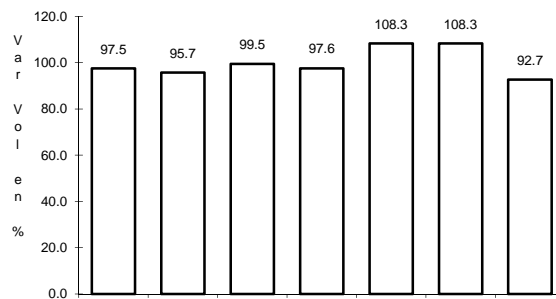
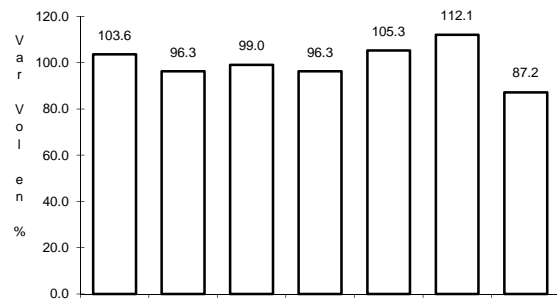
Tipo: 3

Sent: 2

34 CARR: Monclova - Estación Candela

CLAVE: 00501

RUTA: COA-030-NL



Km: 5.10

Tipo: 1

Sent: 1

Km: 5.10

Tipo: 1

Sent: 2

Km: 125.50

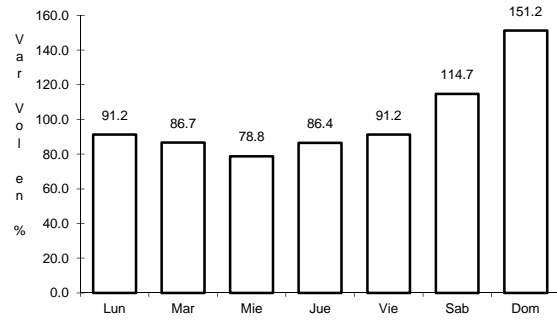
Tipo: 1

Sent: 0

38 CARR: Ramal a Lamadrid

CLAVE: 05522

RUTA: COA-042

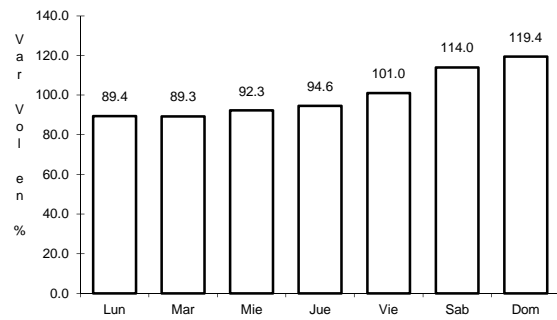


Km: 0.00 Tipo: 3 Sent: 0

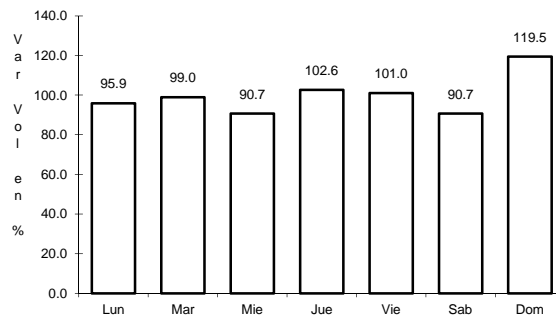
39 CARR: Sabinas - Don Martín

CLAVE: 05501

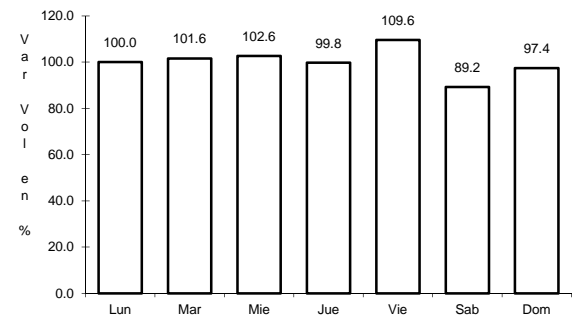
RUTA: COA-025



Km: 0.00 Tipo: 3 Sent: 0



Km: 53.00 Tipo: 3 Sent: 0

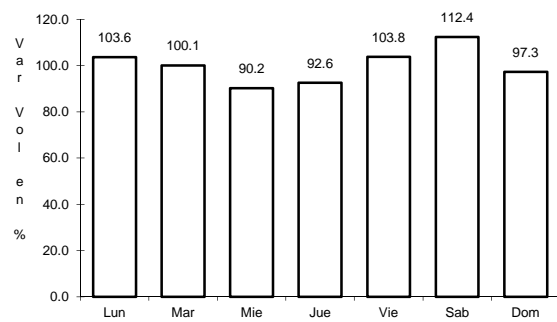


Km: 66.00 Tipo: 1 Sent: 0

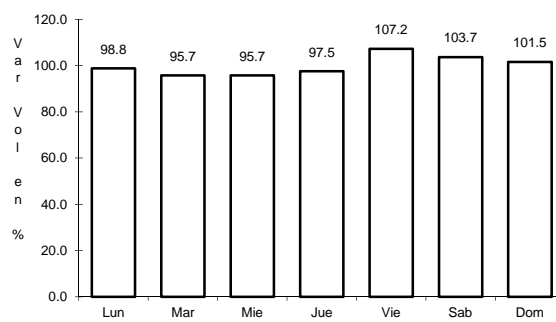
40 CARR: Saltillo - Arteaga

CLAVE: 05008

RUTA: COA-106



Km: 0.00 Tipo: 3 Sent: 1

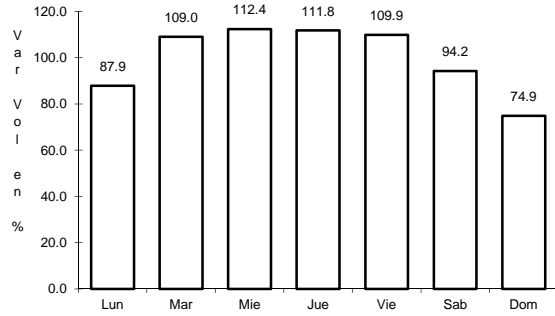


Km: 0.00 Tipo: 3 Sent: 2

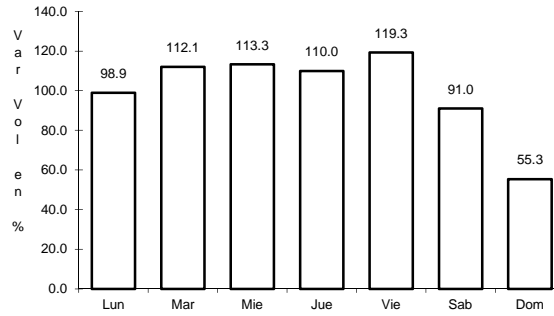
44 CARR: Torreón - Escuadrón 201

CLAVE: 05022

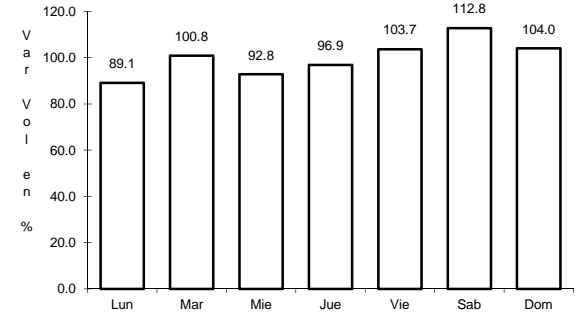
RUTA: COA-011



Km: 0.00 Tipo: 3 Sent: 1



Km: 0.00 Tipo: 3 Sent: 2

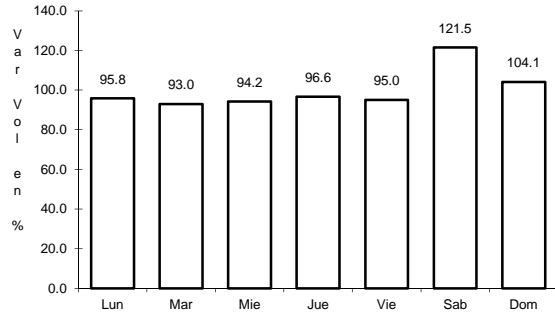


Km: 17.06 Tipo: 1 Sent: 0

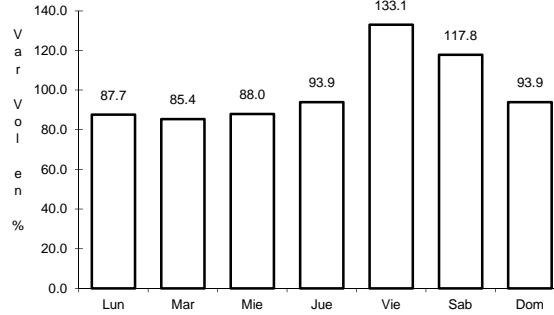
45 CARR: Nueva Rosita - Ent. Allende (Cuota)

CLAVE: 05500

RUTA: COA-D



Km: 0.00 Tipo: 3 Sent: 1



Km: 0.00 Tipo: 3 Sent: 2